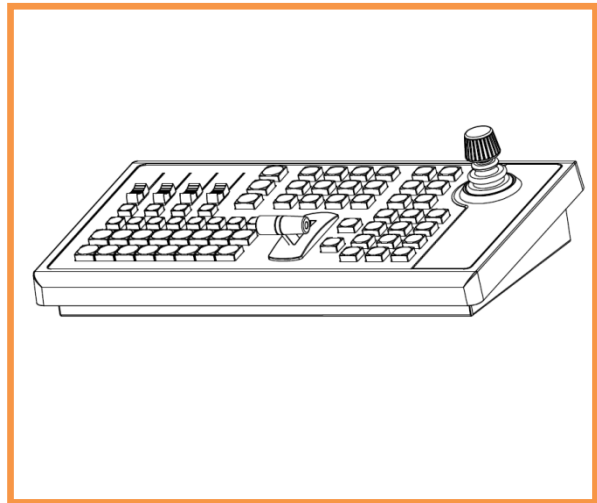
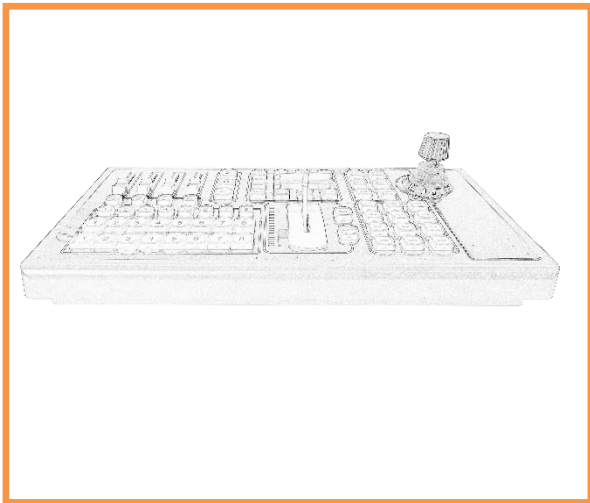
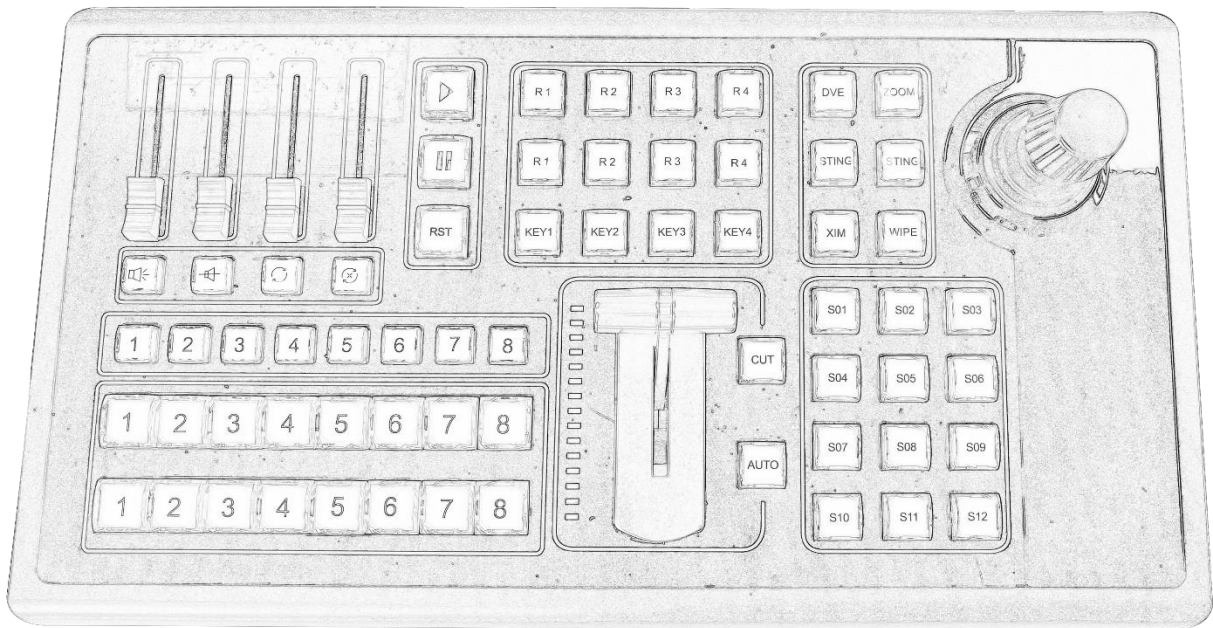

vMix Console Switchboard Controller

--control vMix software



CATALOGUE

vMix Console Controller	4
Hardware configuration:	4
Characteristic:	4
Input-output connector:	5
Connect with vMix	7
vMix Switcher Console connection:.....	7
Switcher is recognized by the computer successfully:	7
Open the vMix software	9
Check if the switcher is recognized by the vMix:	9
Click ‘Shortcuts’, then click ‘MIDI Settings’ to enter the next interface;	10
Choose ‘SMC75-vMix’ device, click ‘OK’:	10
Click ‘OK’ after finishing all the shortcuts setting:.....	11
Import Shortcuts Template:	12
Open vMix click ‘Settings’:.....	12
Click on the ‘Shortcuts’ and click ‘Import’ to import the file entry.....	13
Add ‘Shortcuts’	15
Open the vMix software and click ‘Settings’:	15
Click ‘Shortcuts’;	16
Click ‘Add’ button to select the function you want to add:	16
Example:.....	17
Set the control of the button indicator by the vMix:.....	20
Click “Activators”; Click the mouse ‘Add’ button to select the function you want to add:	20
select ‘Event’ you want to add:.....	21
Choose ‘Type’;	21
Press the keyboard button or switch the device button;	22
Press and hold the function to be set up:	22
Click OK in 3 windows;	23
vMix Joystick Connect with PTZ Cameras	24
Change Communication Protocol (3-Keys Combination).....	24
Setting Preset Position (2-Keys Combination)	24
Calling Preset Position	25
Choose the Correct Camera.....	25
Camera Wiring with vMix Control Panel.....	25

Connect via RS422 port.....	25
NOTICE:	27

vMix Console Controller

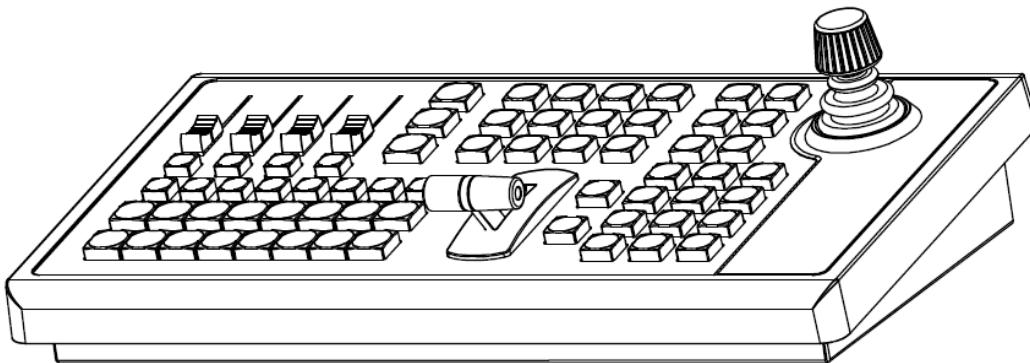
Multi - function keyboard controller, products for the audio / video live broadcast system, audio and video recording system:

Hardware configuration:

Buttons	63PCS
Joystick	3 axis joystick
T-Bar	Hall sensor T-bar, Level LED indicates
Volume Control	4 channels
Communication Interface	USB, RS232, RS422

Characteristic:

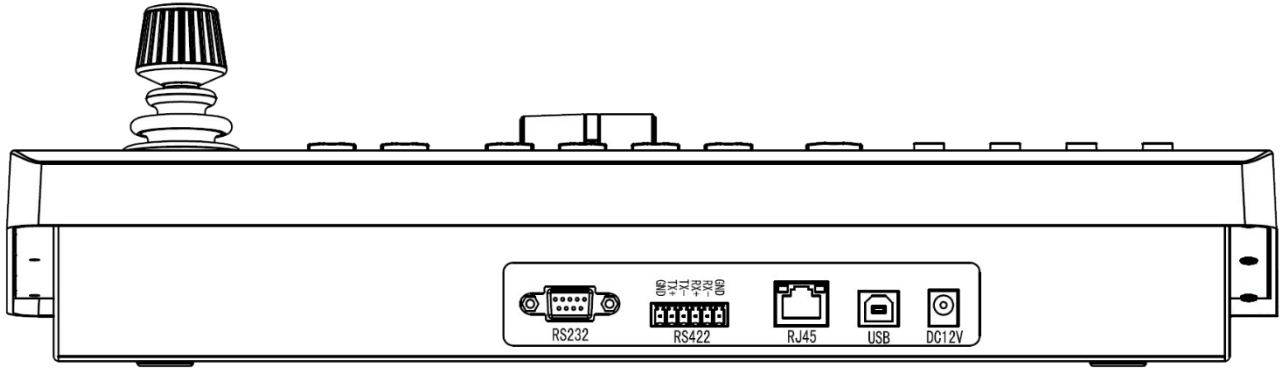
Buttons	63pcs
Volume	4 channel
Joystick	1pcs (with 3 axis joystick)
T-bar	1pcs T-bar
Interface	USB*1, RS232*1, RS422*1
Power supply	DC12V/1000mA
Net weight	3.0KG
Gross weight	4.35KG
Product size	400X220X114mm
Packaging Size	47x28x20cm



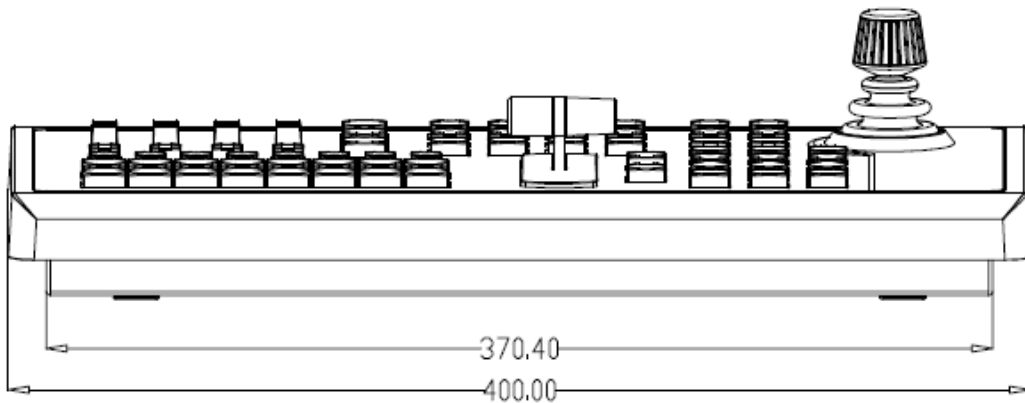
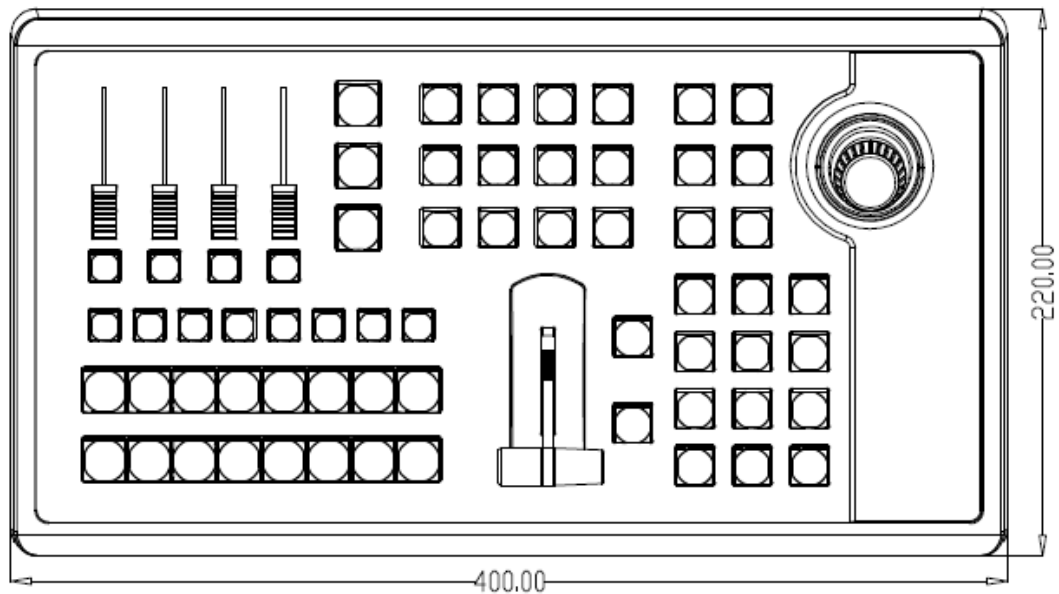
Input-output connector:

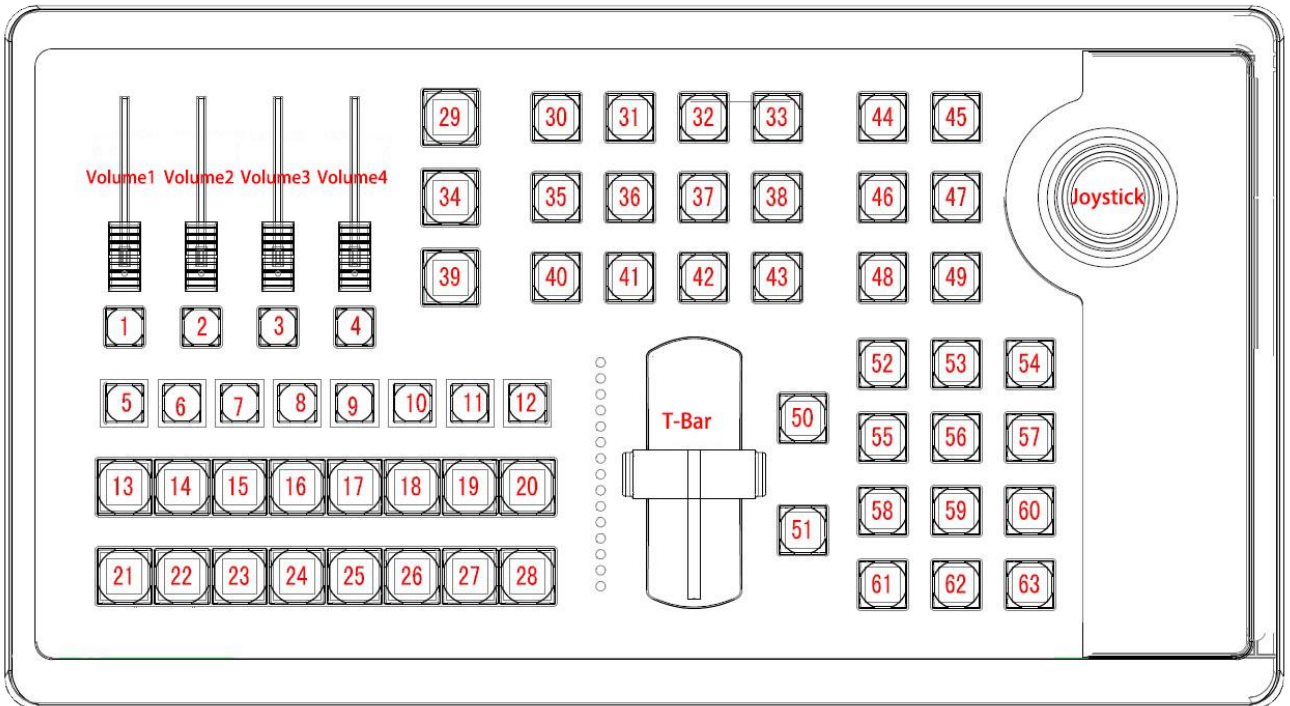
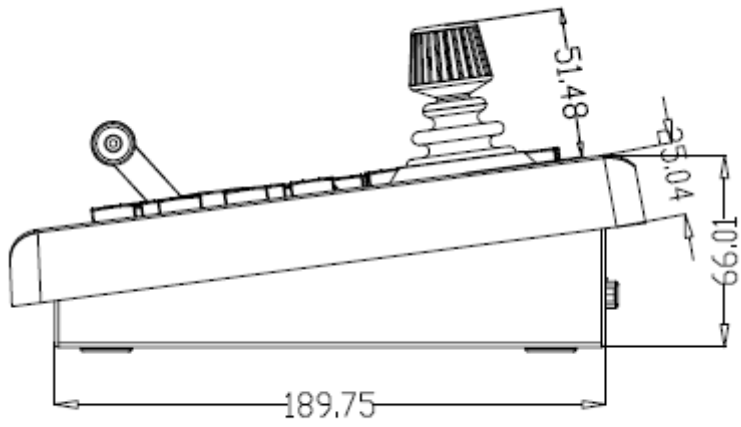
Power Connector: DC12V (8~20V) 1000mA

USB Port: USB2.0 HID Protocol (USB Audio Device)



Drawing:



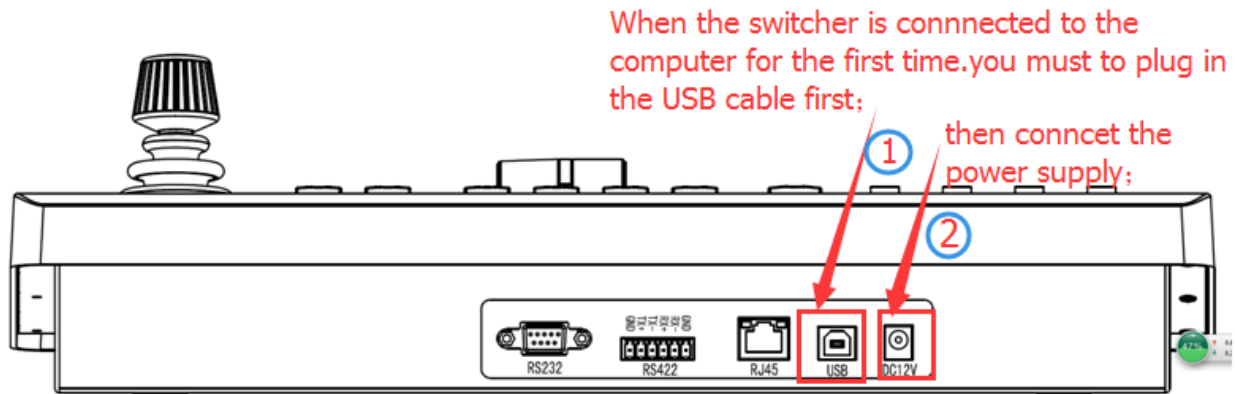


Connect with vMix

vMix Switcher Console connection:

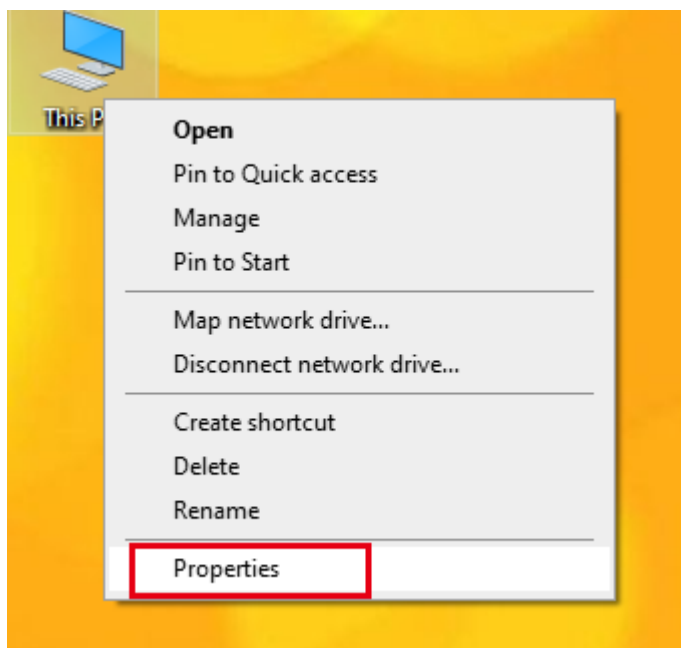
Note:

When using the switcher device for the first time, before switching on the software, you must first connect the switcher's USB cable to the computer, and then connect the 12V power supply to the switcher.

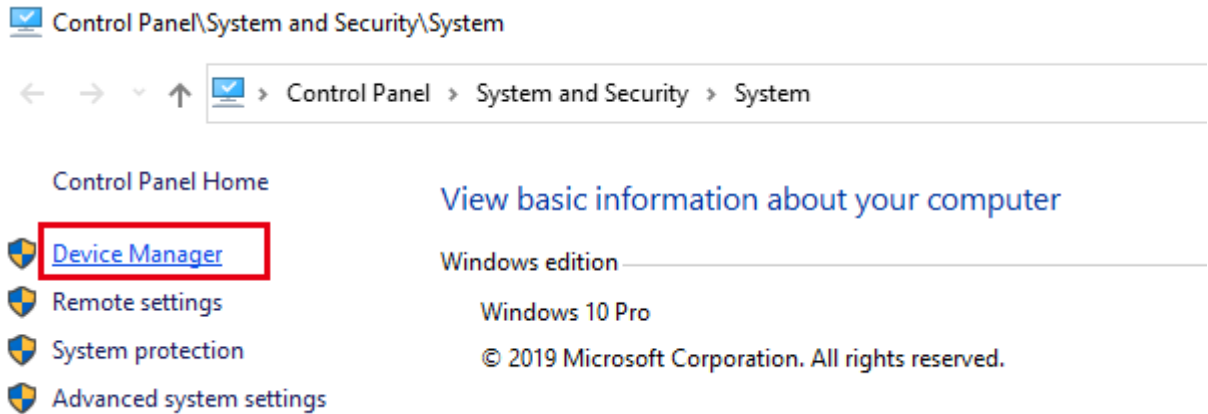


Switcher is recognized by the computer successfully:

Right click the desktop 'This PC' and choose 'Properties'.

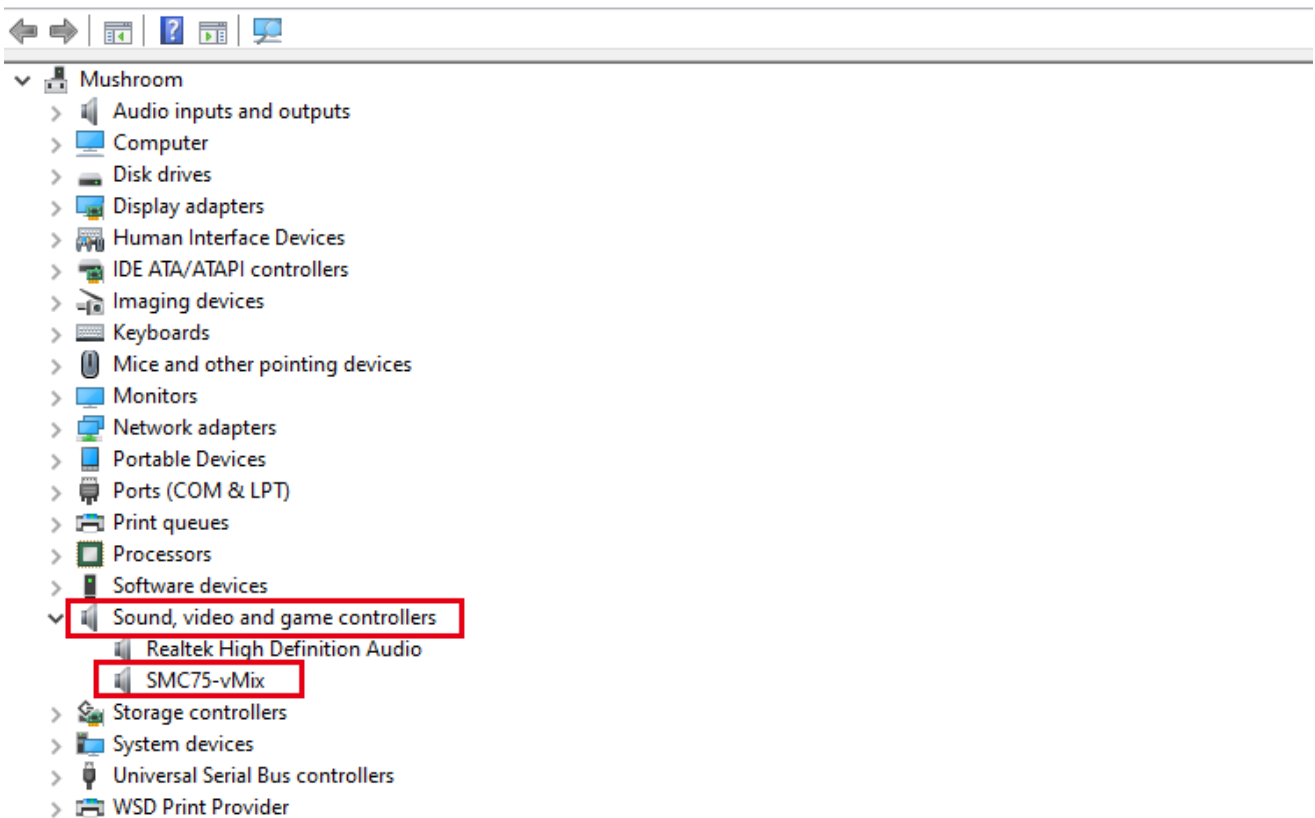


Choose 'Device Manager'



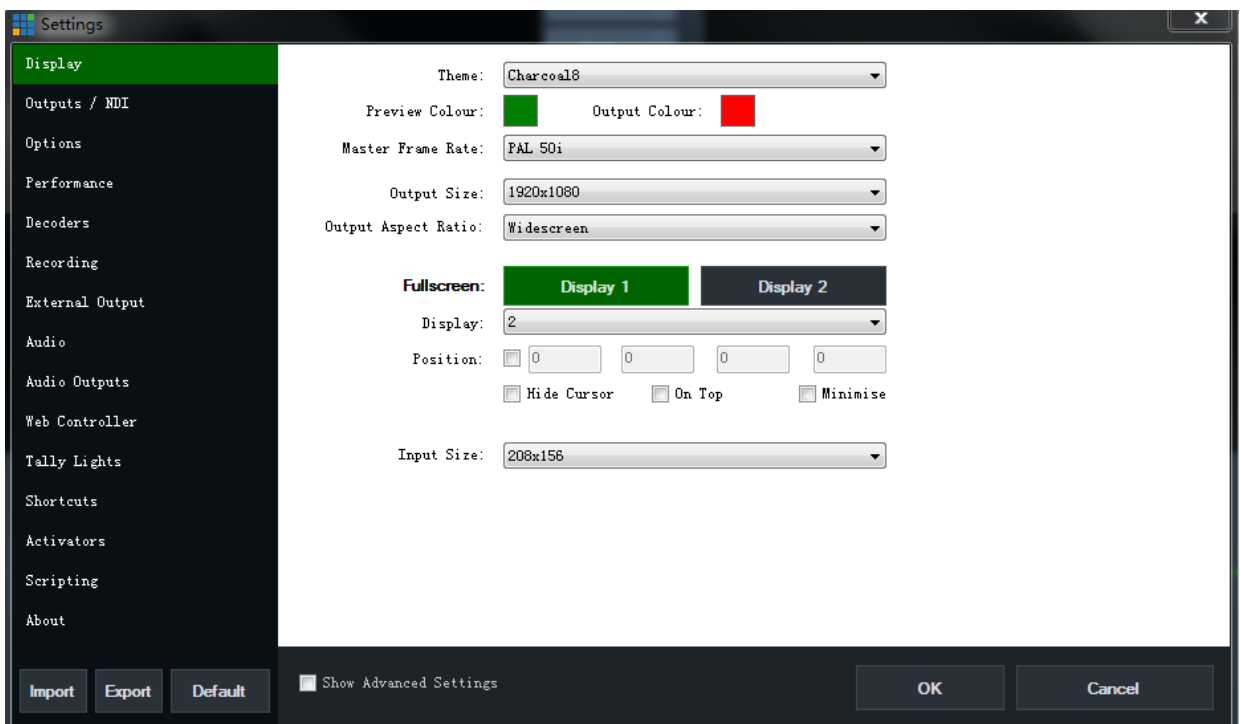
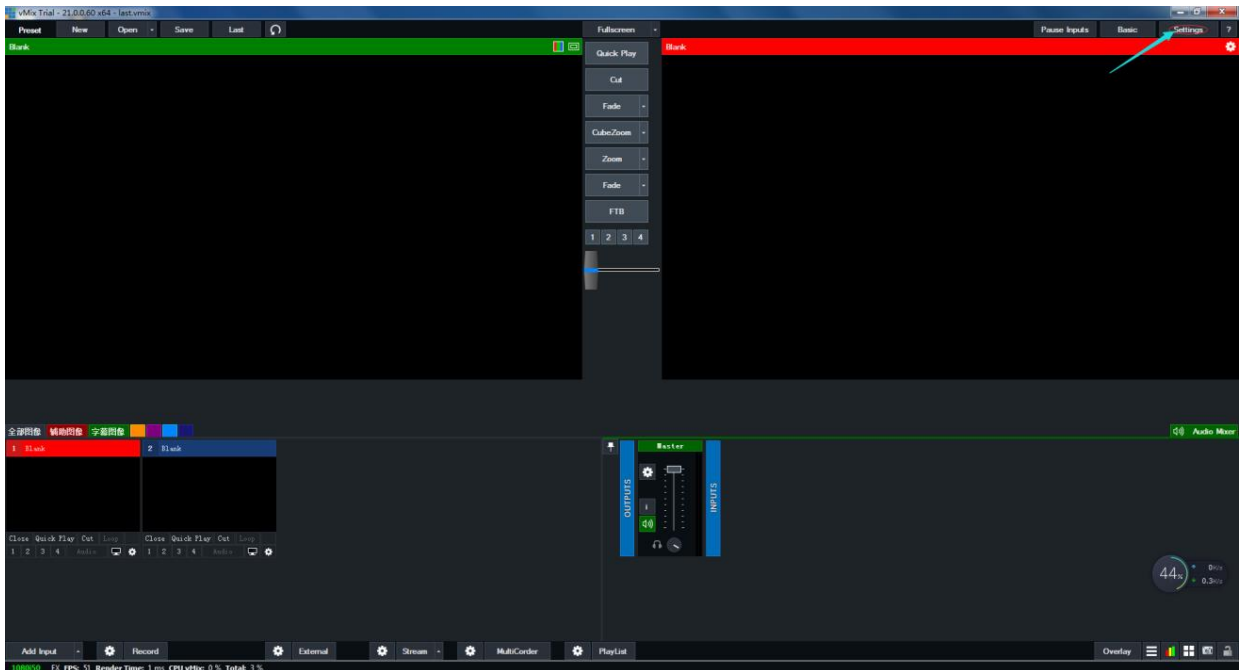
Choose "Sound, video and game controllers" :

"SMC75-vMix" will be found in the drop-down menu, the device identification is successful; "SMC75-vMix" is device name

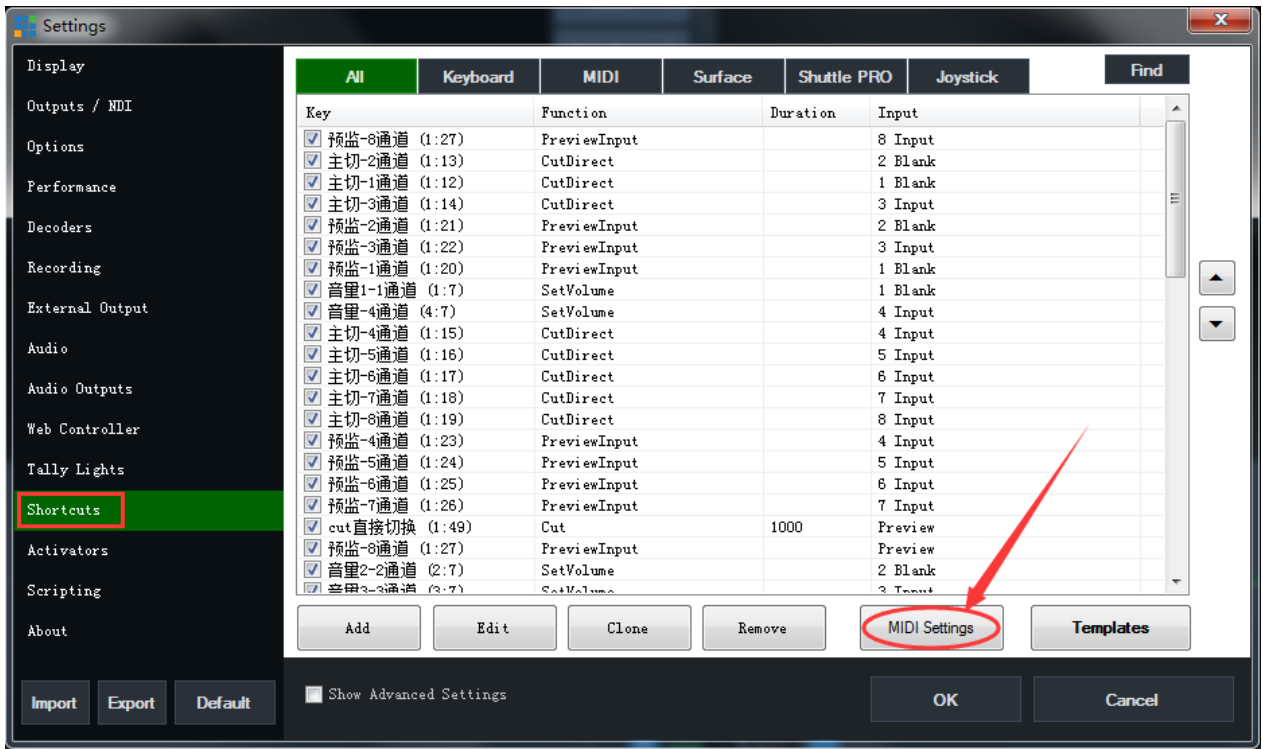


Open the vMix software

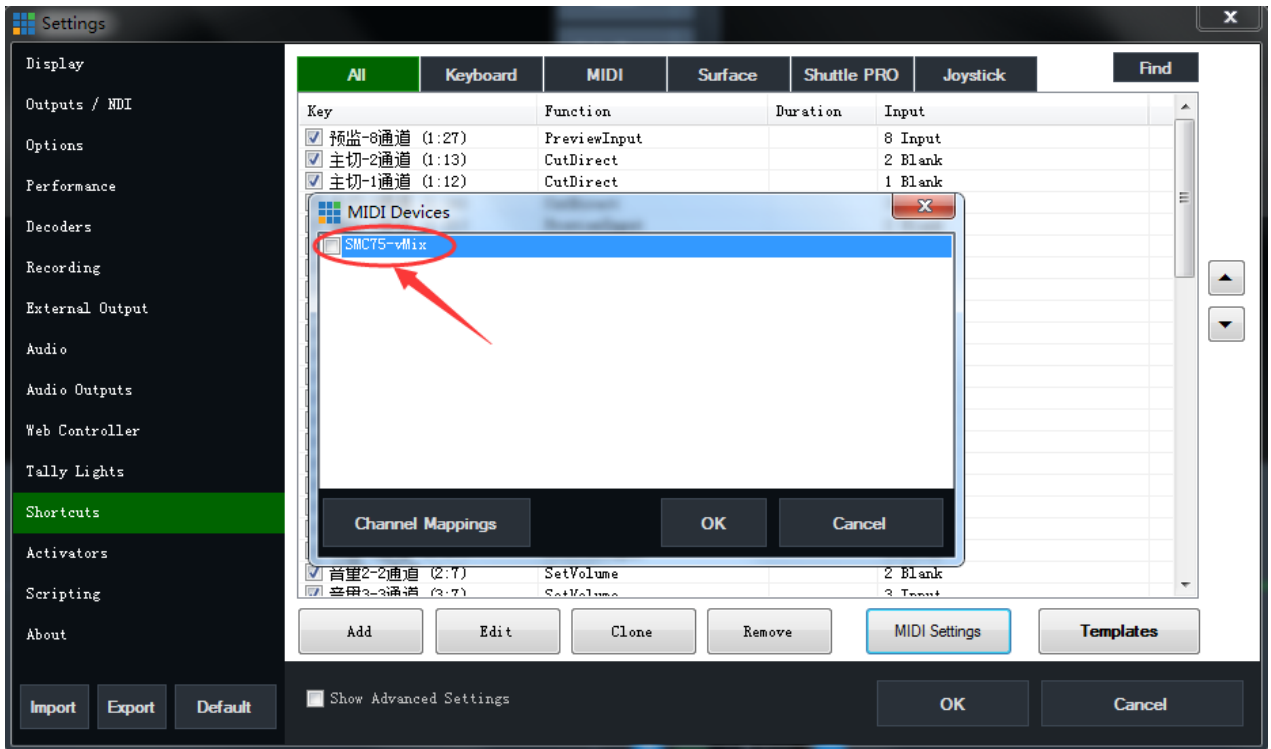
Check if the switcher is recognized by the vMix:

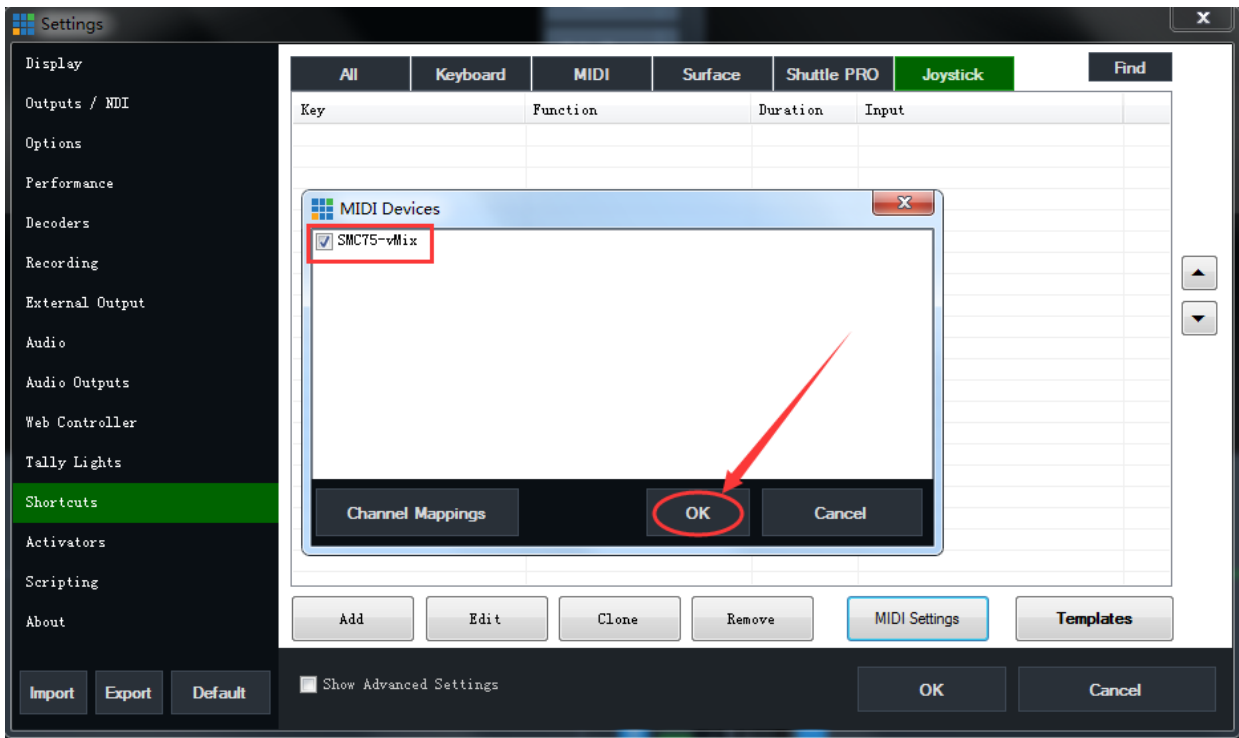


Click 'Shortcuts', then click 'MIDI Settings' to enter the next interface;

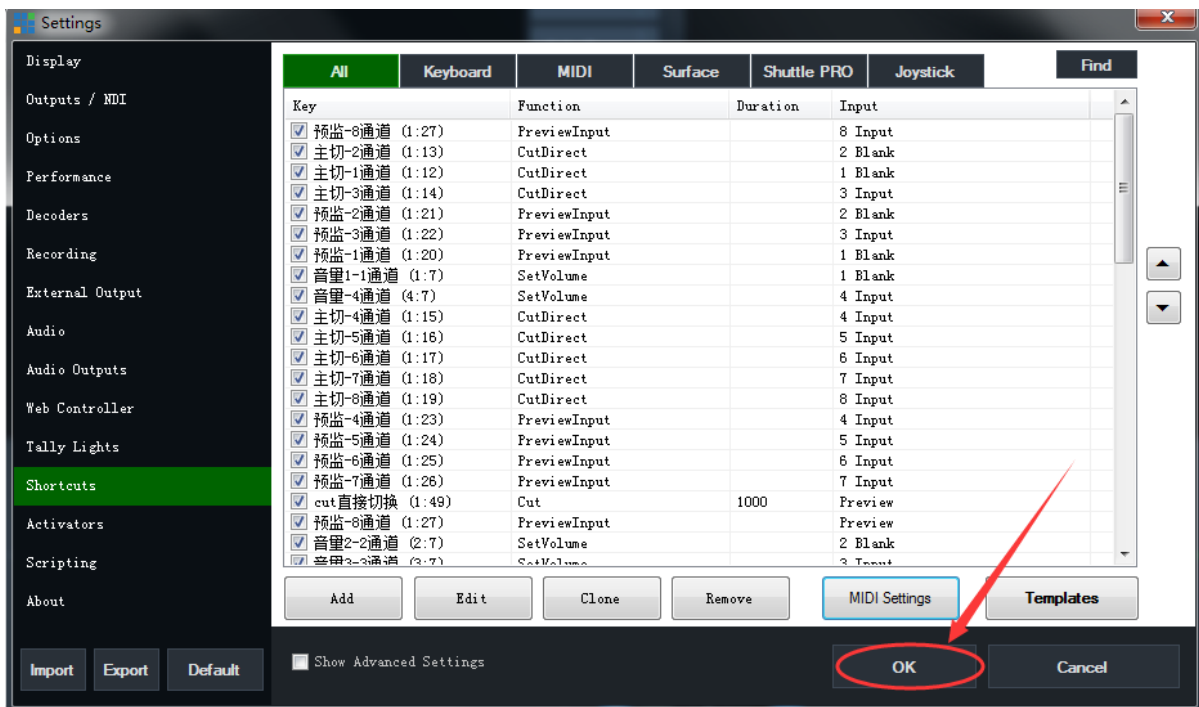


Choose 'SMC75-vMix' device, click 'OK':



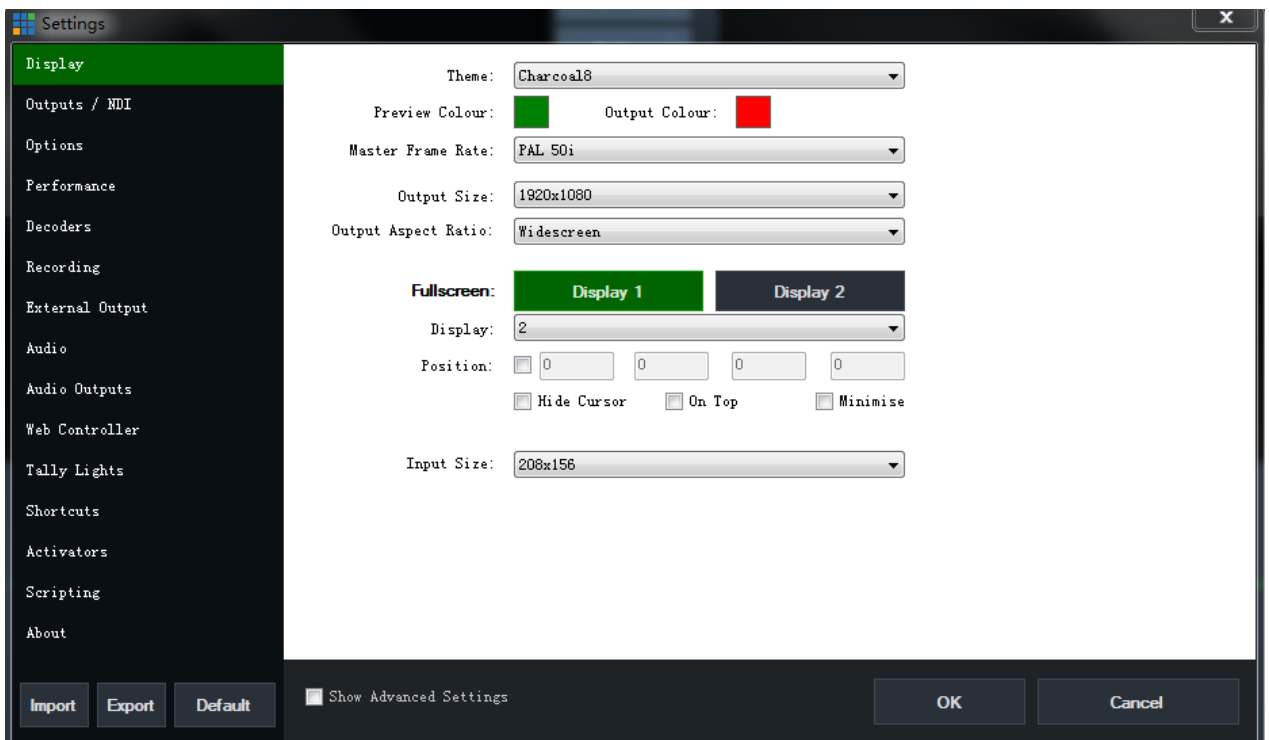
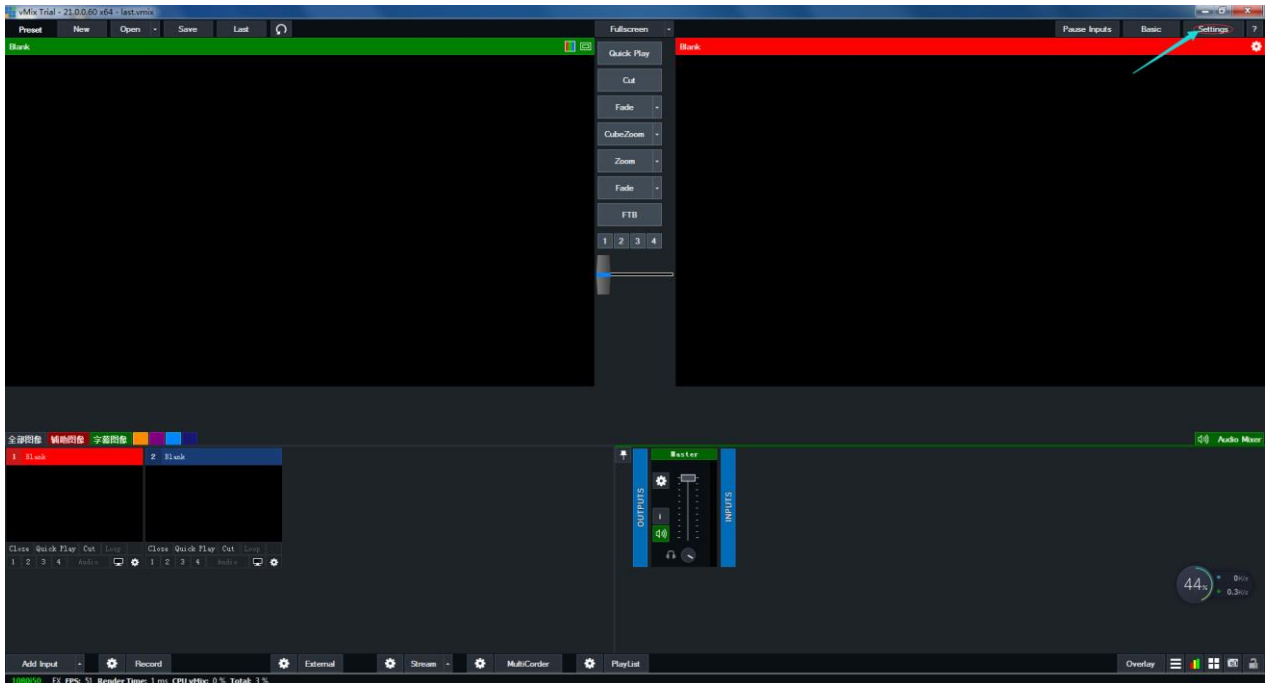


Click 'OK' after finishing all the shortcuts setting:



Import Shortcuts Template:

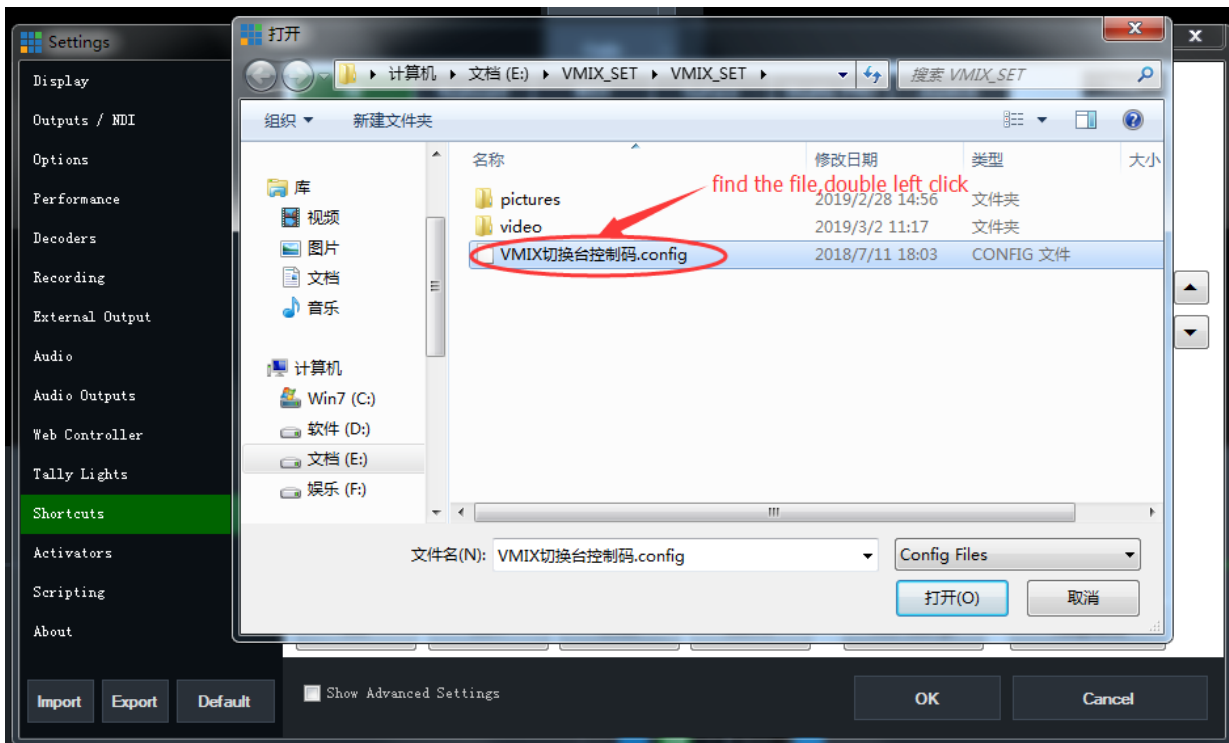
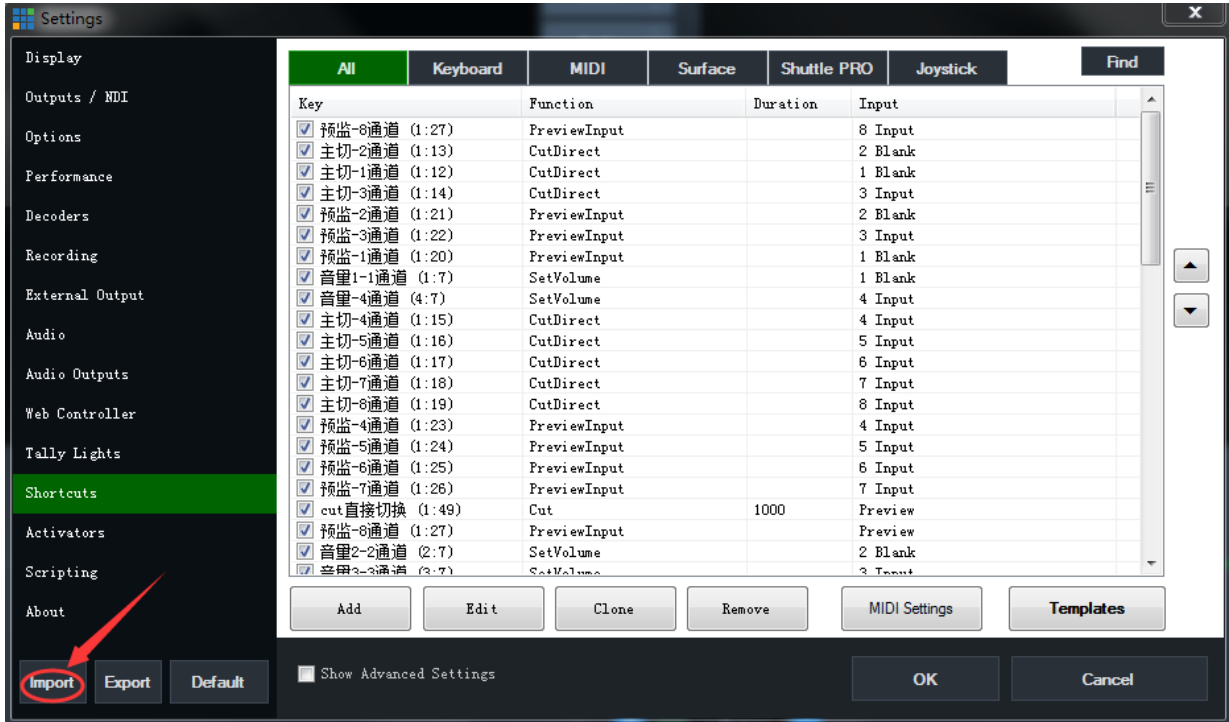
Open vMix click 'Settings':

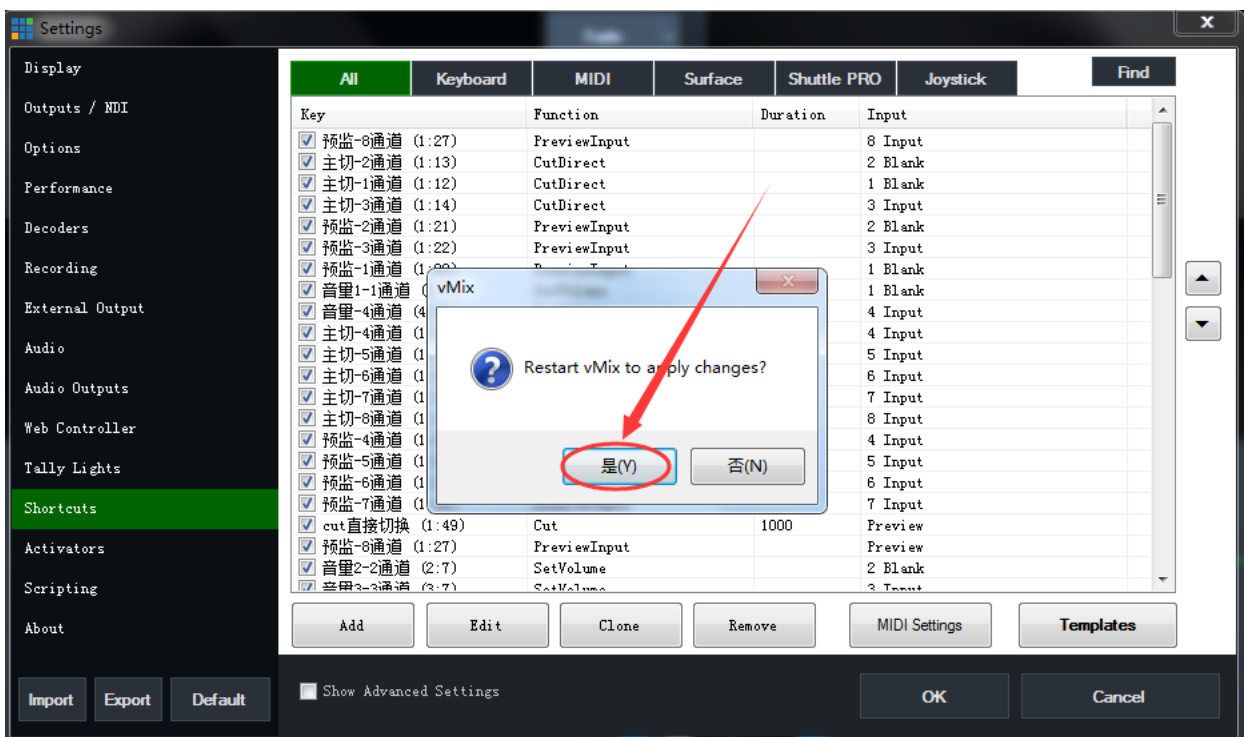
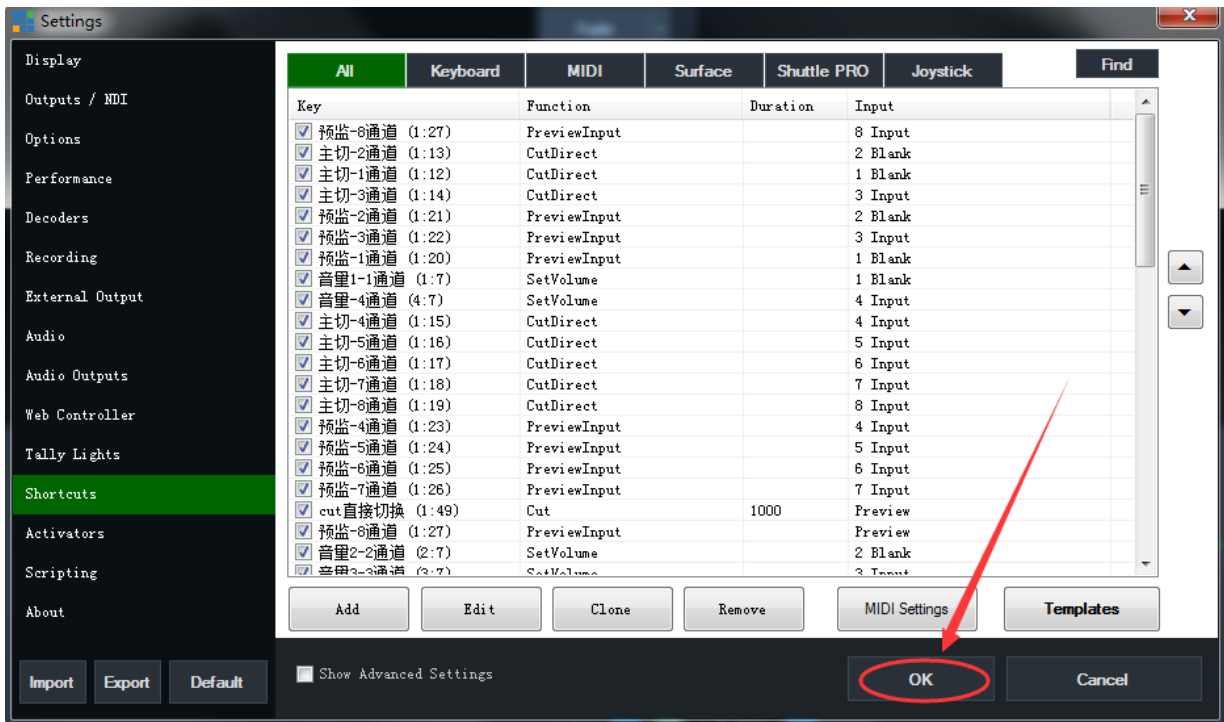


Click on the ‘Shortcuts’ and click ‘Import’ to import the file entry.

Note:

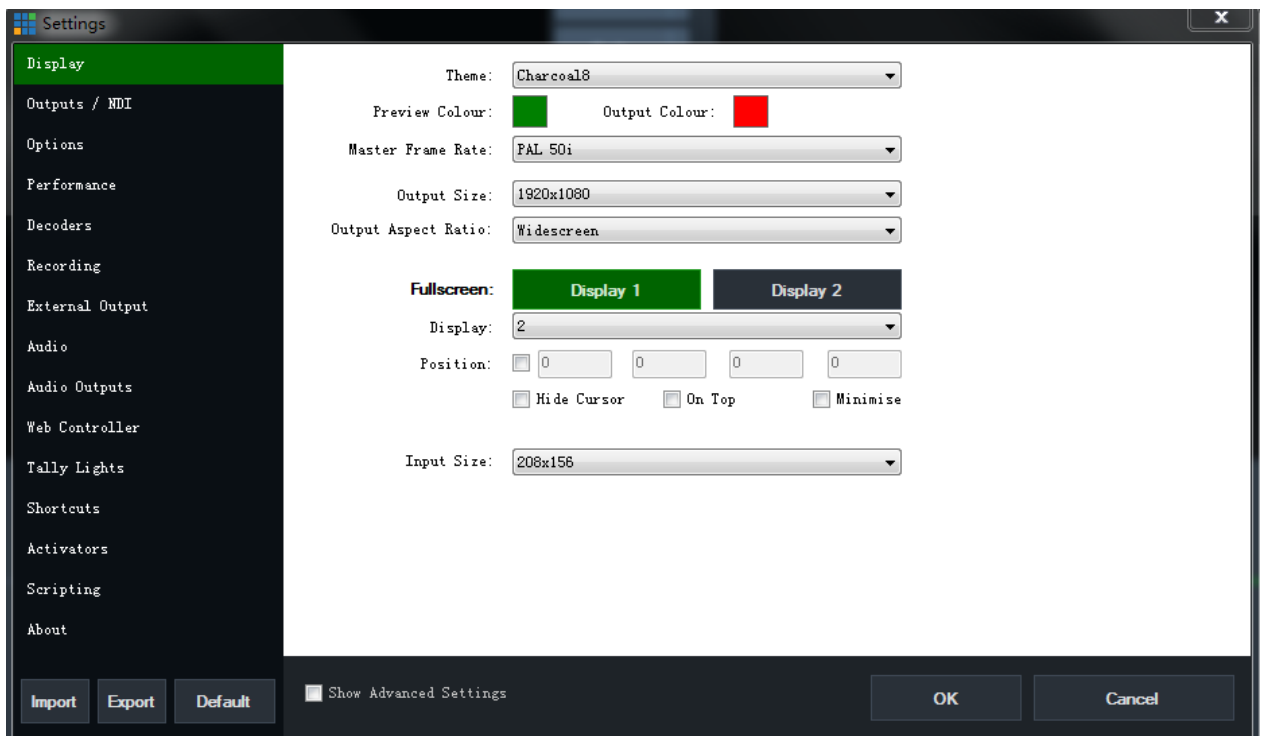
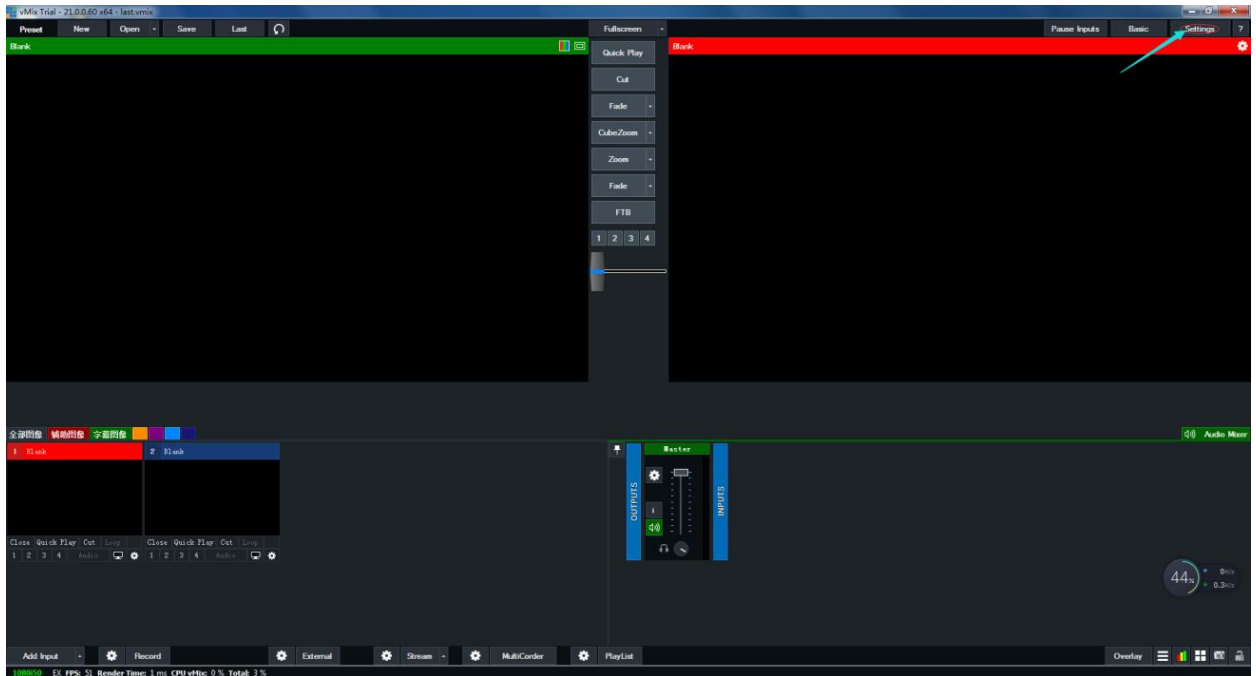
vMix software will restart, and the shortcut key template is successfully imported



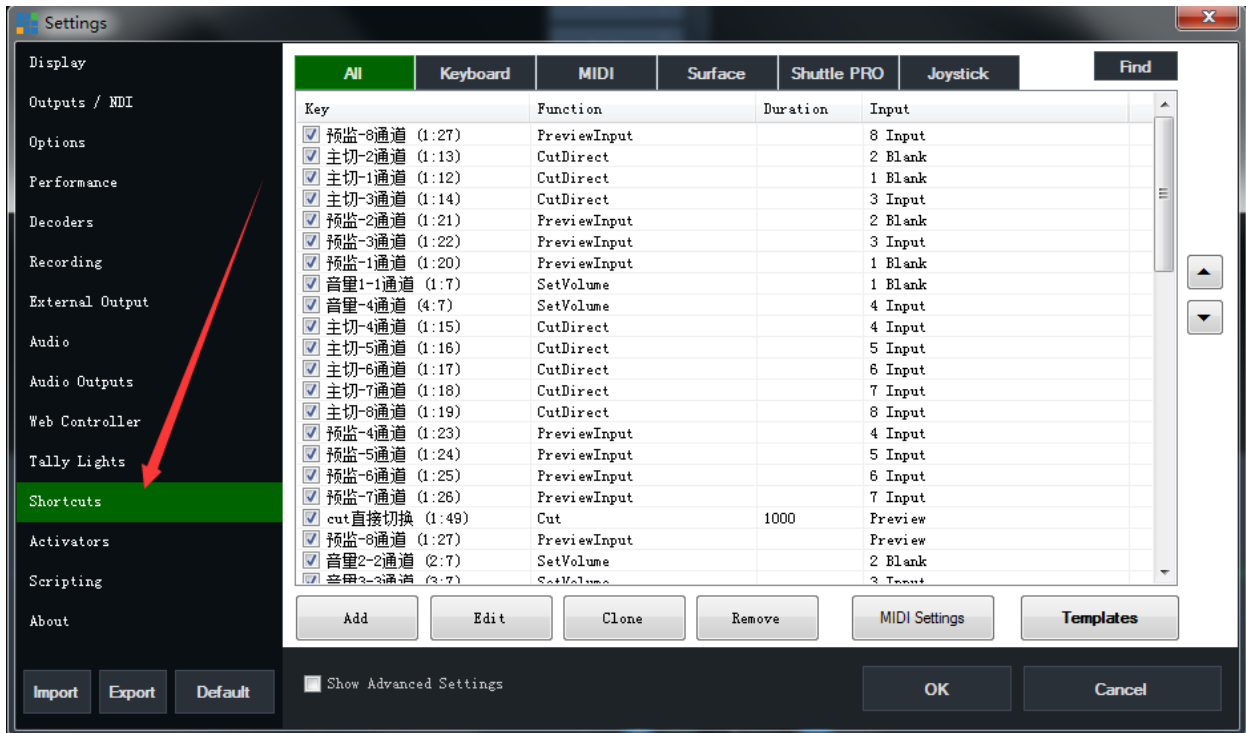


Add 'Shortcuts'

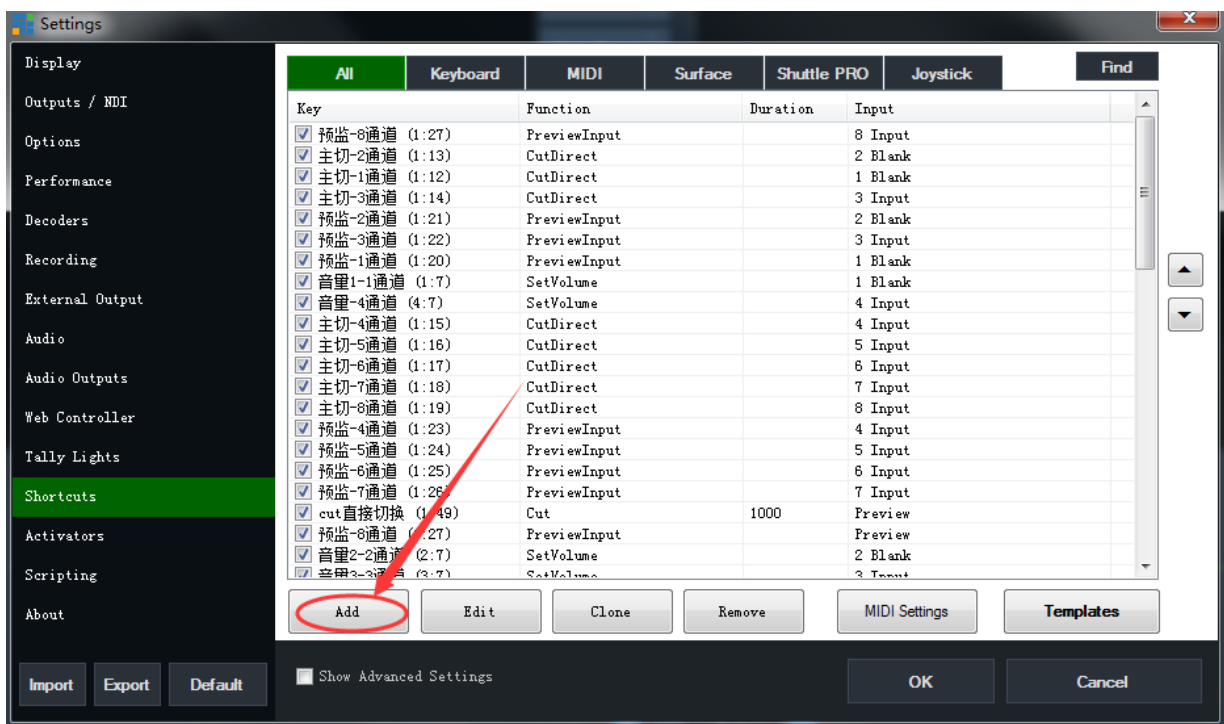
Open the vMix software and click 'Settings':

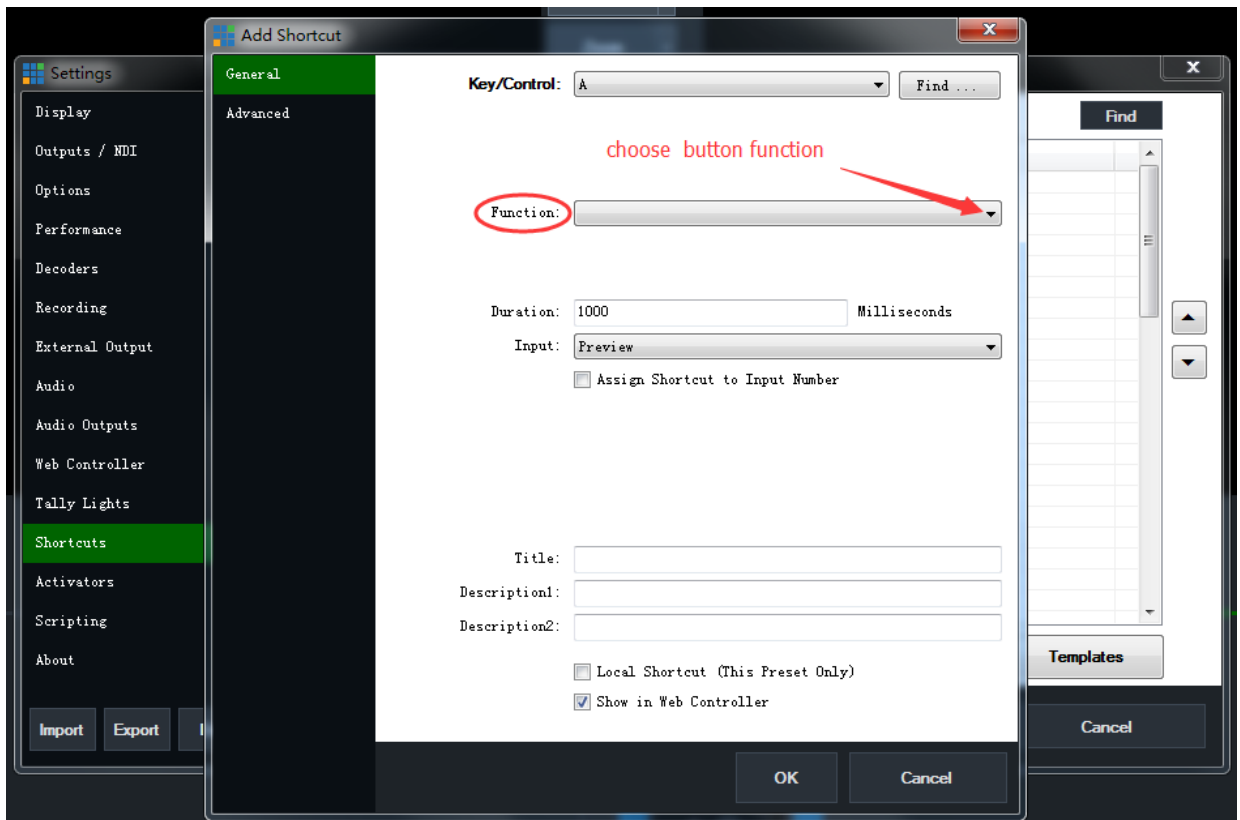


Click 'Shortcuts';



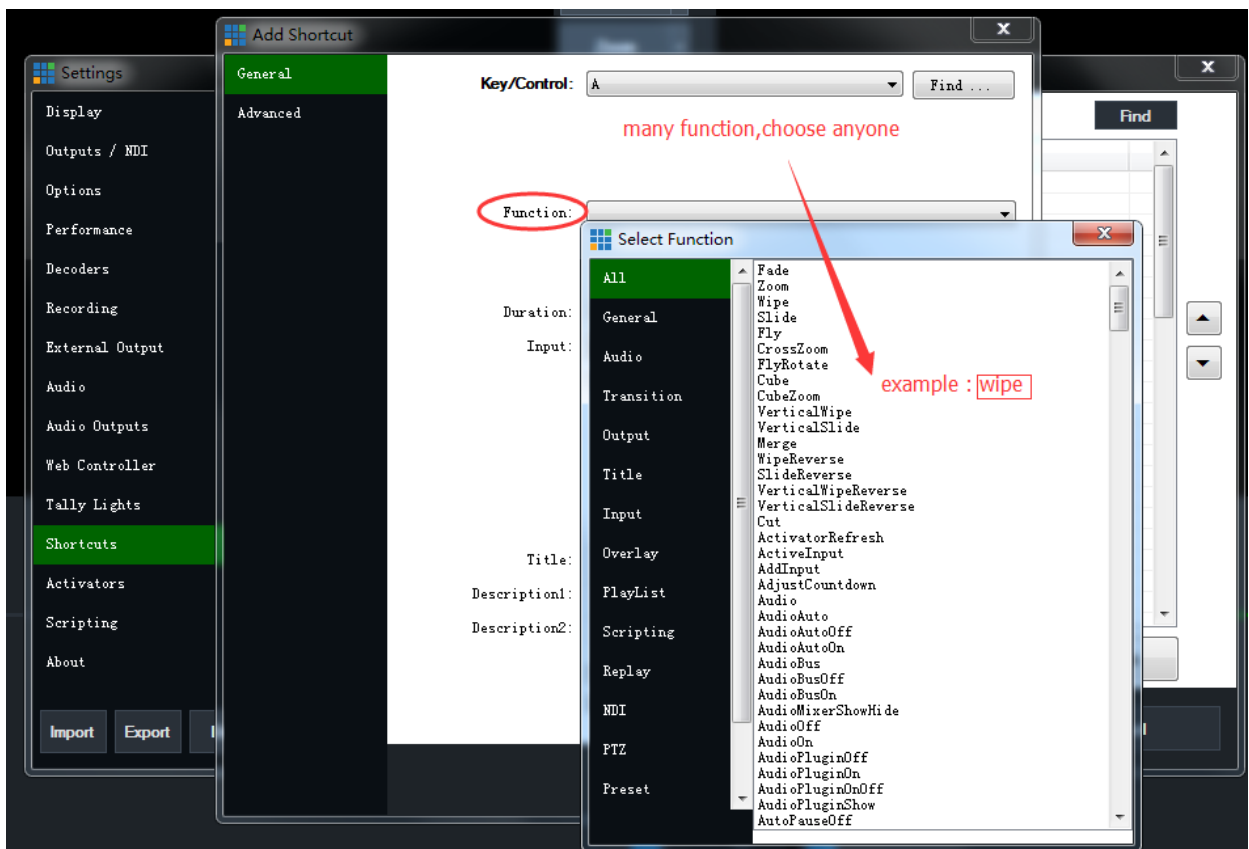
Click 'Add' button to select the function you want to add:



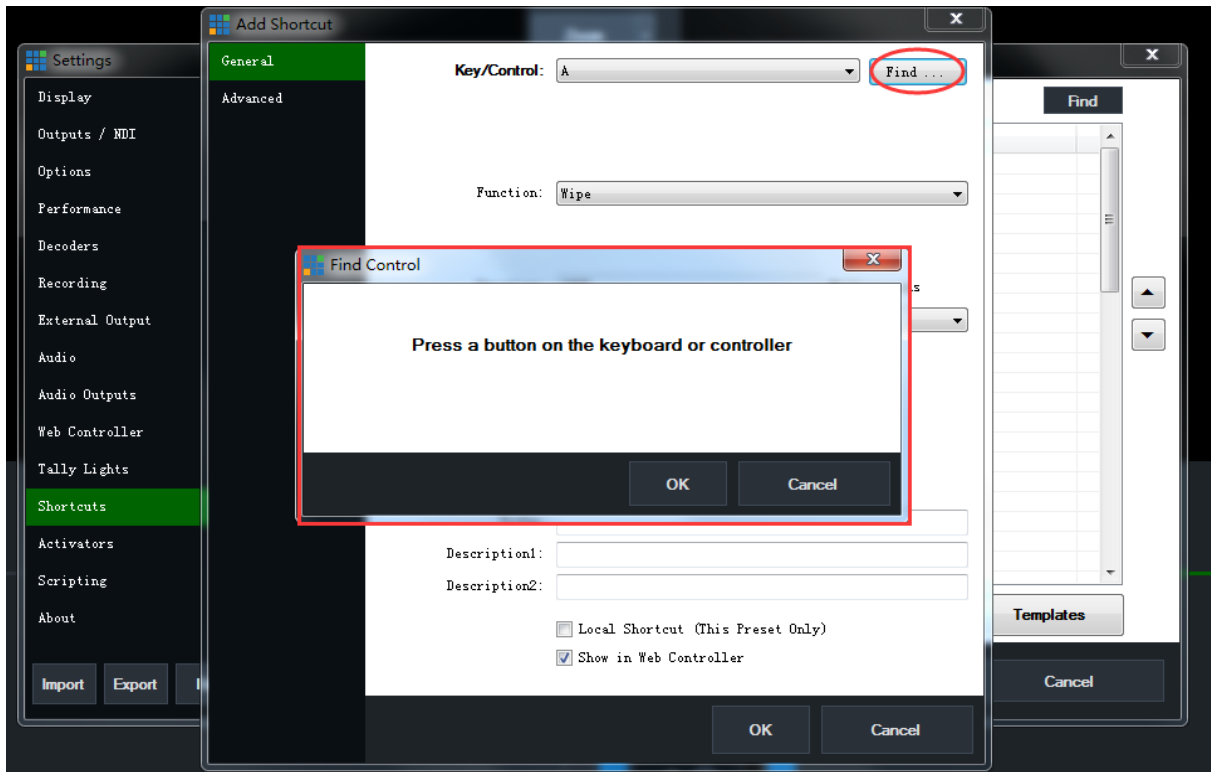


Example:

Set shortcut button to achieve 'wipe' transition effect:



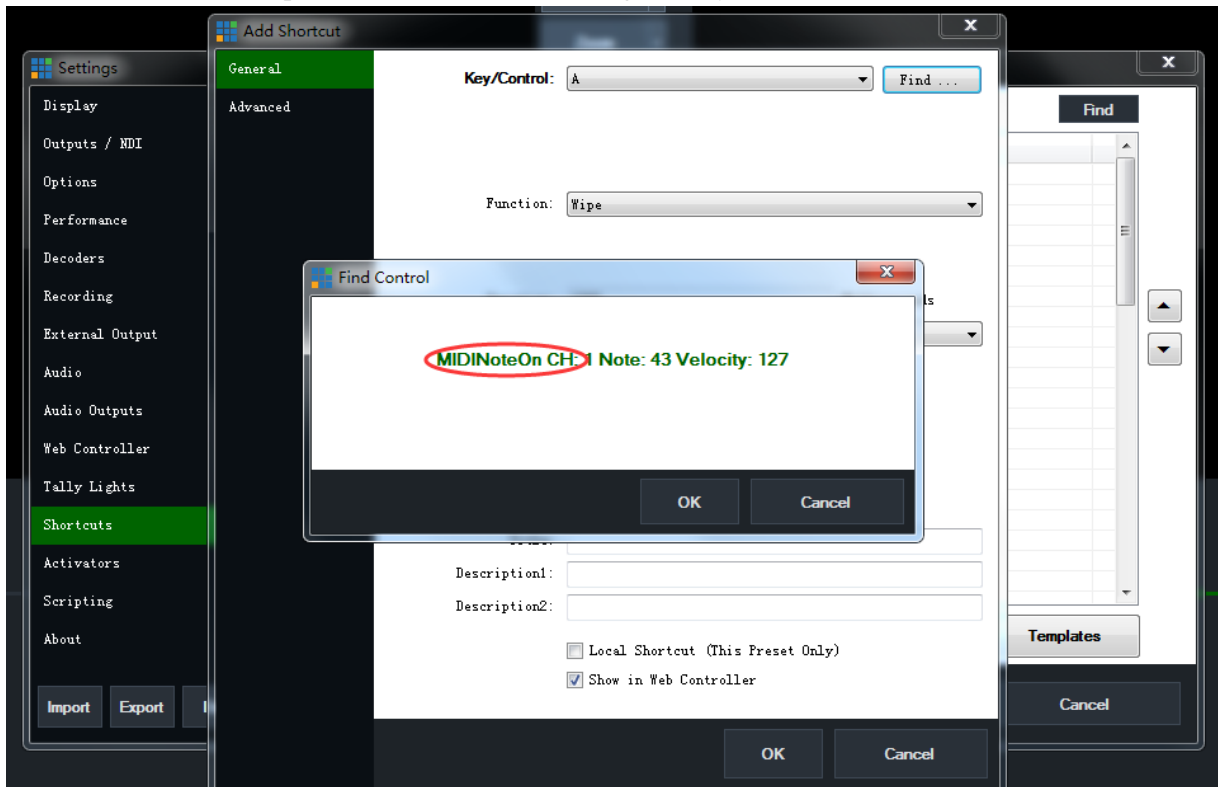
When the mouse clicks find, a dialog box will pop up on the screen, and the above prompts: press the keyboard button or switch the device button:

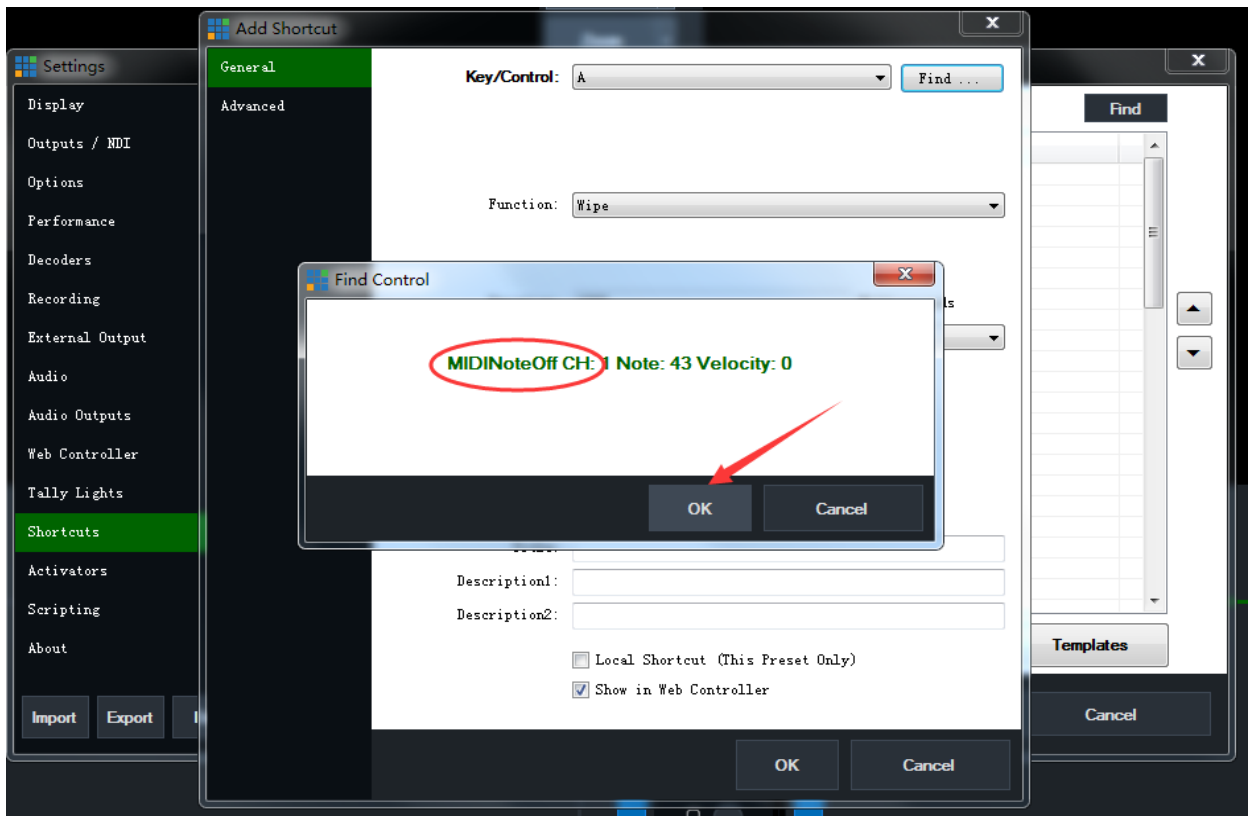


Press and hold the function to be set up dialog box will display the message:

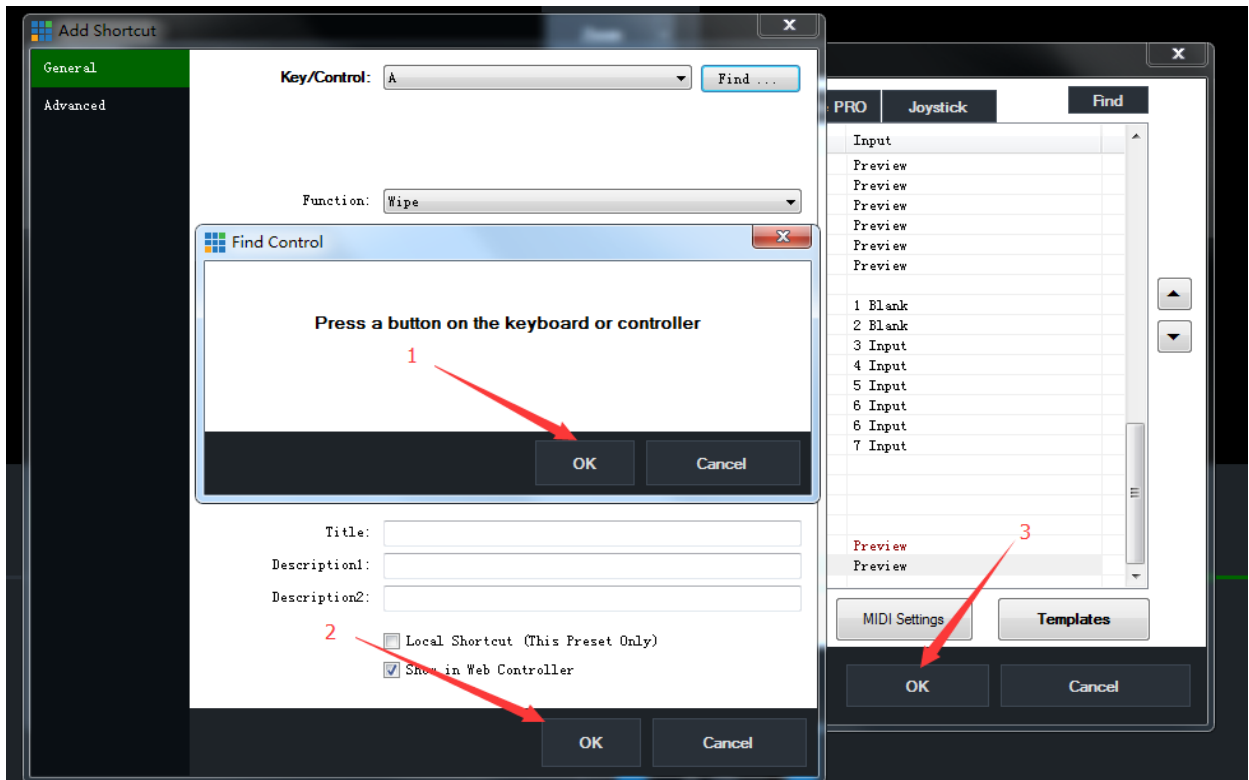
'MIDINoteOn CH...', release the button will also have a prompt message:

'MIDINoteOff CH...'; At this point the button has been recognized by the software, click 'OK';



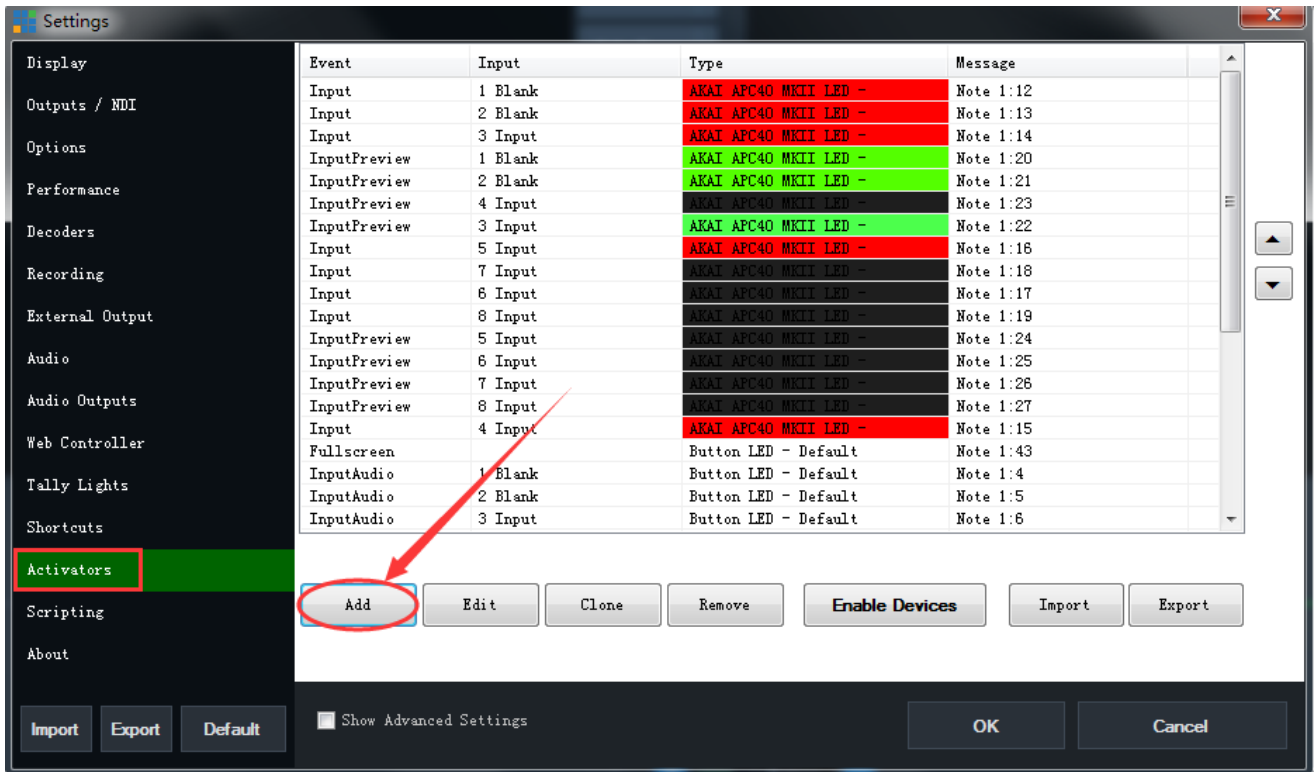


Click 'OK' in the order of 1, 2, and 3 as shown in the following picture; at this time, the button has been defined as the Wipe effect function, which can demonstrate the button definition function;

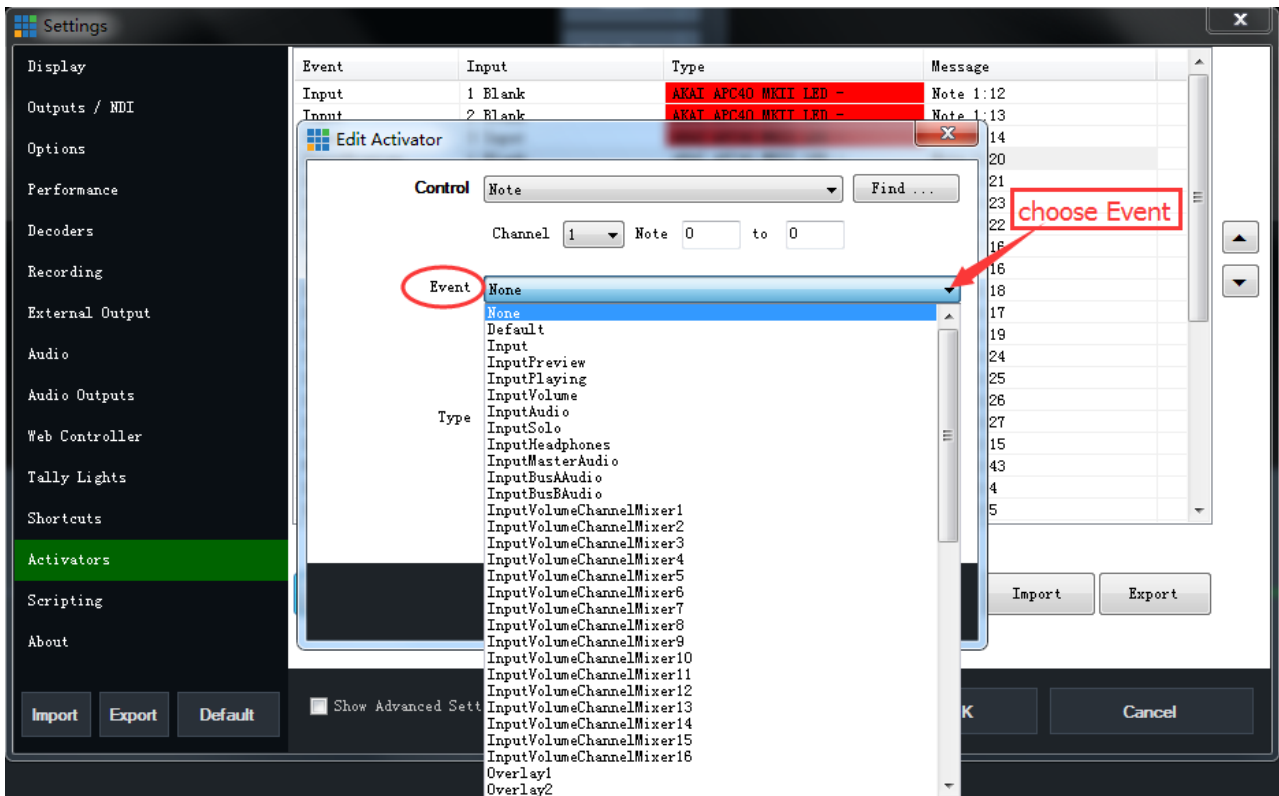


Set the control of the button indicator by the vMix:

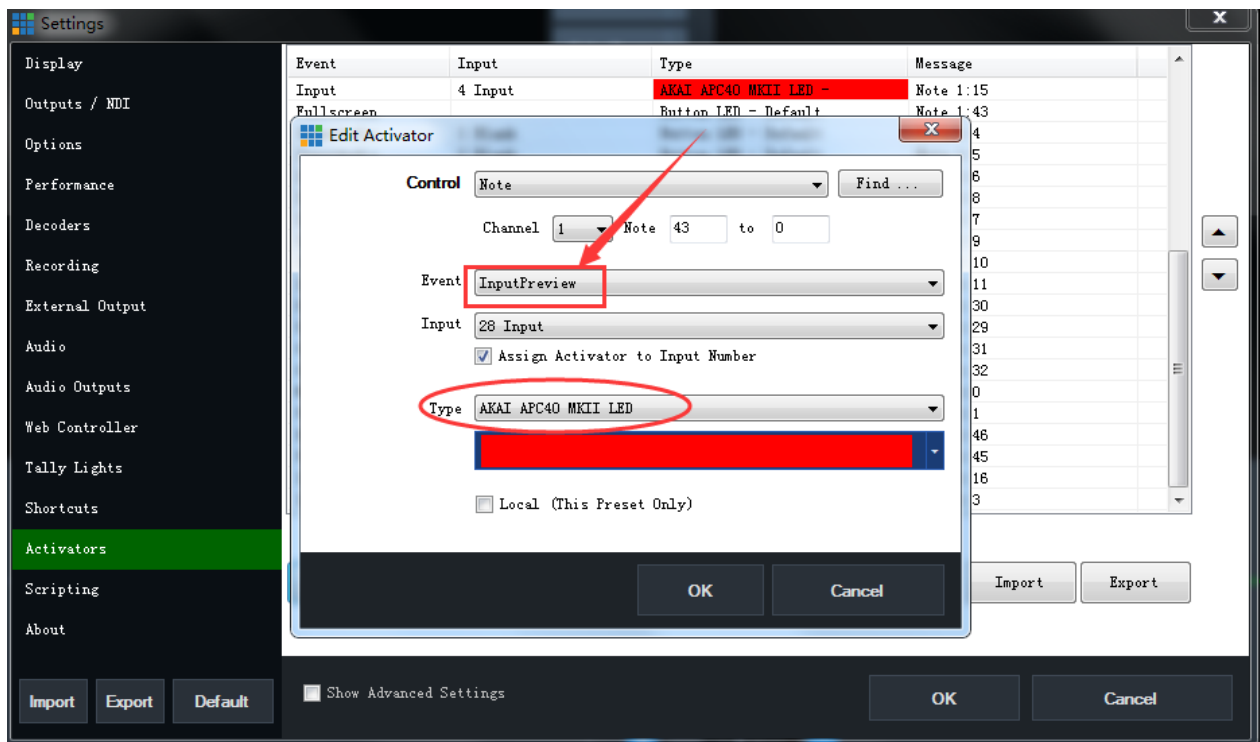
Click “Activators”; Click the mouse ‘Add’ button to select the function you want to add:



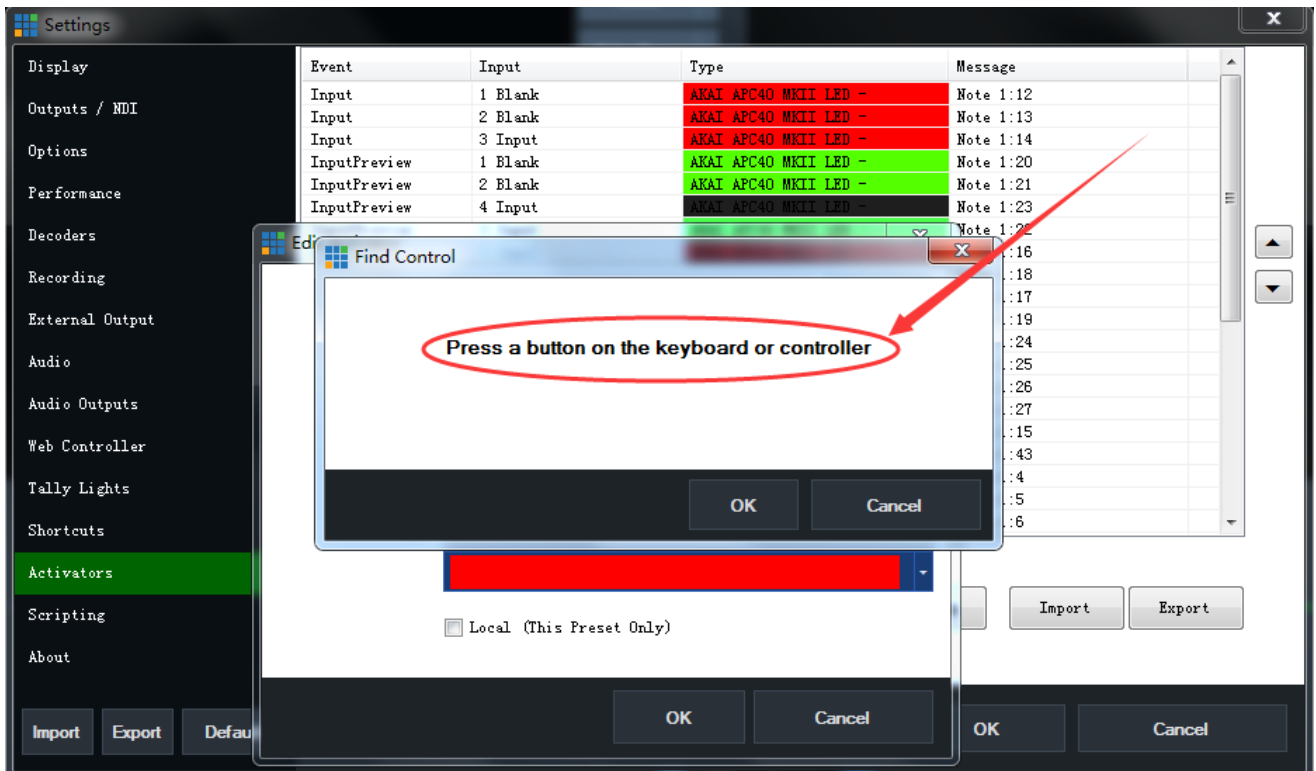
select 'Event' you want to add:



Choose 'Type';



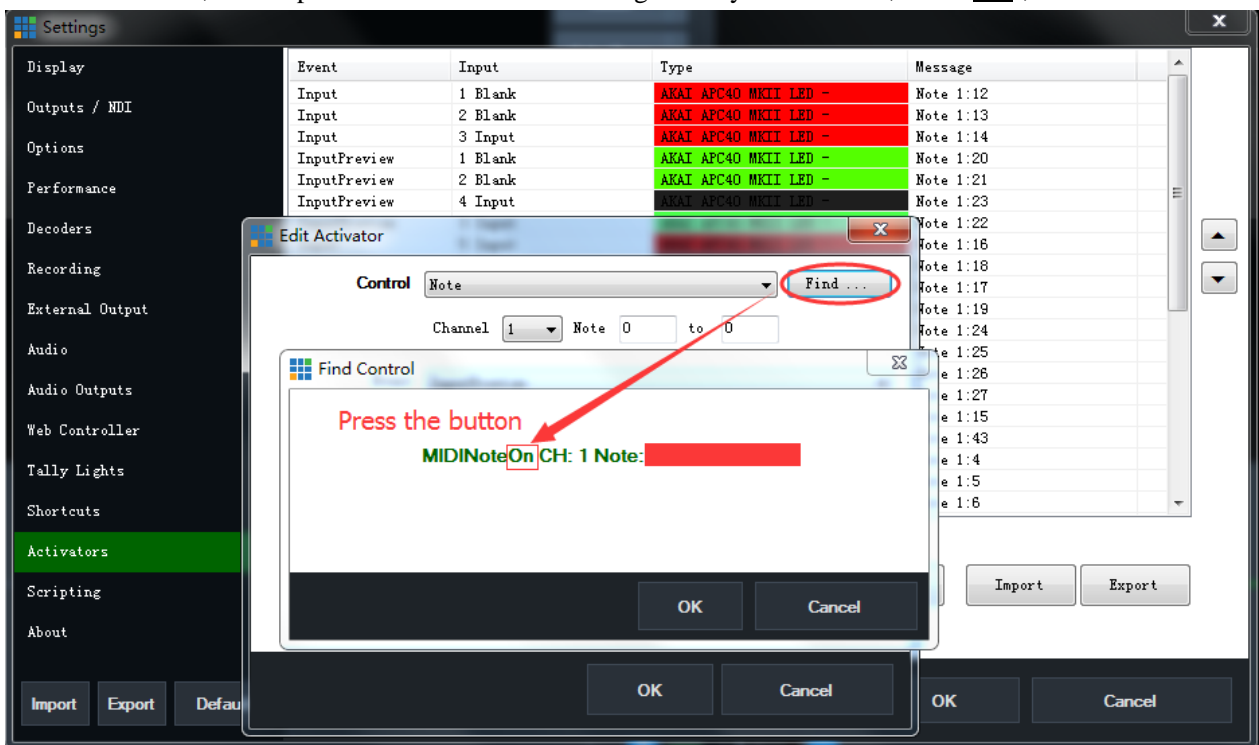
Press the keyboard button or switch the device button;

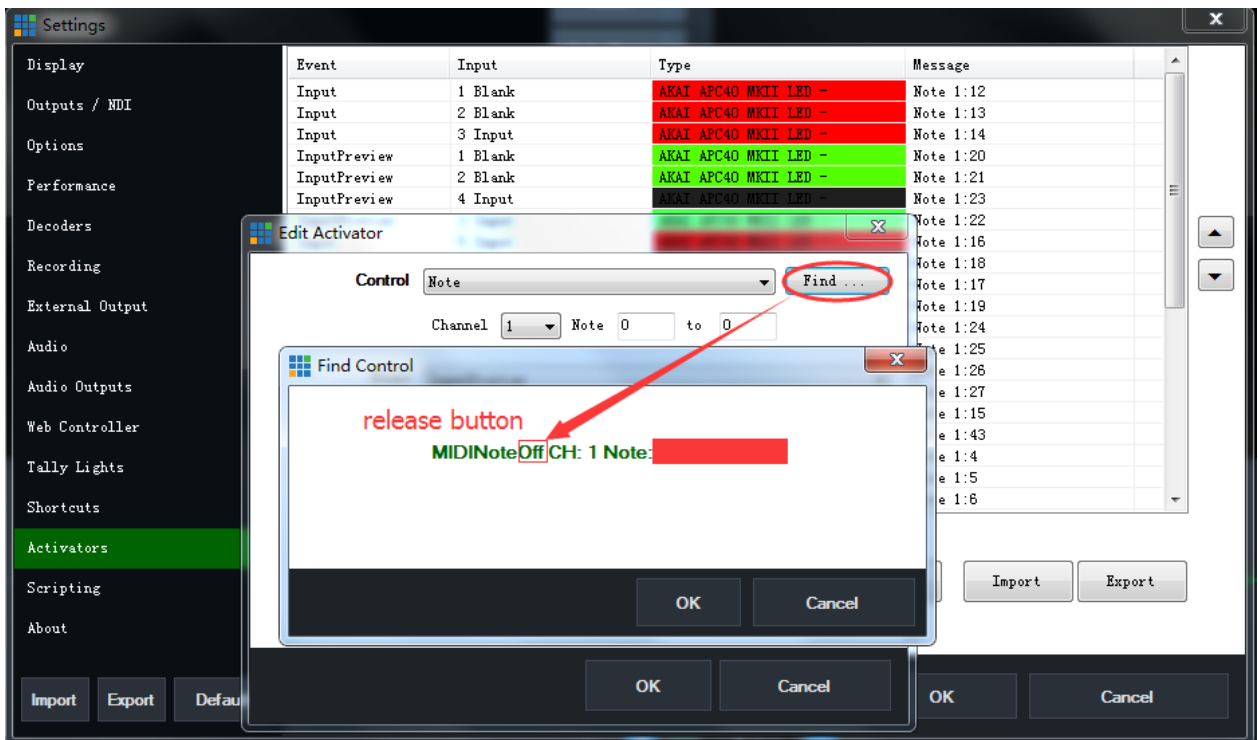


Press and hold the function to be set up:

'MIDINoteOn CH...', release the button will also have a prompt message:

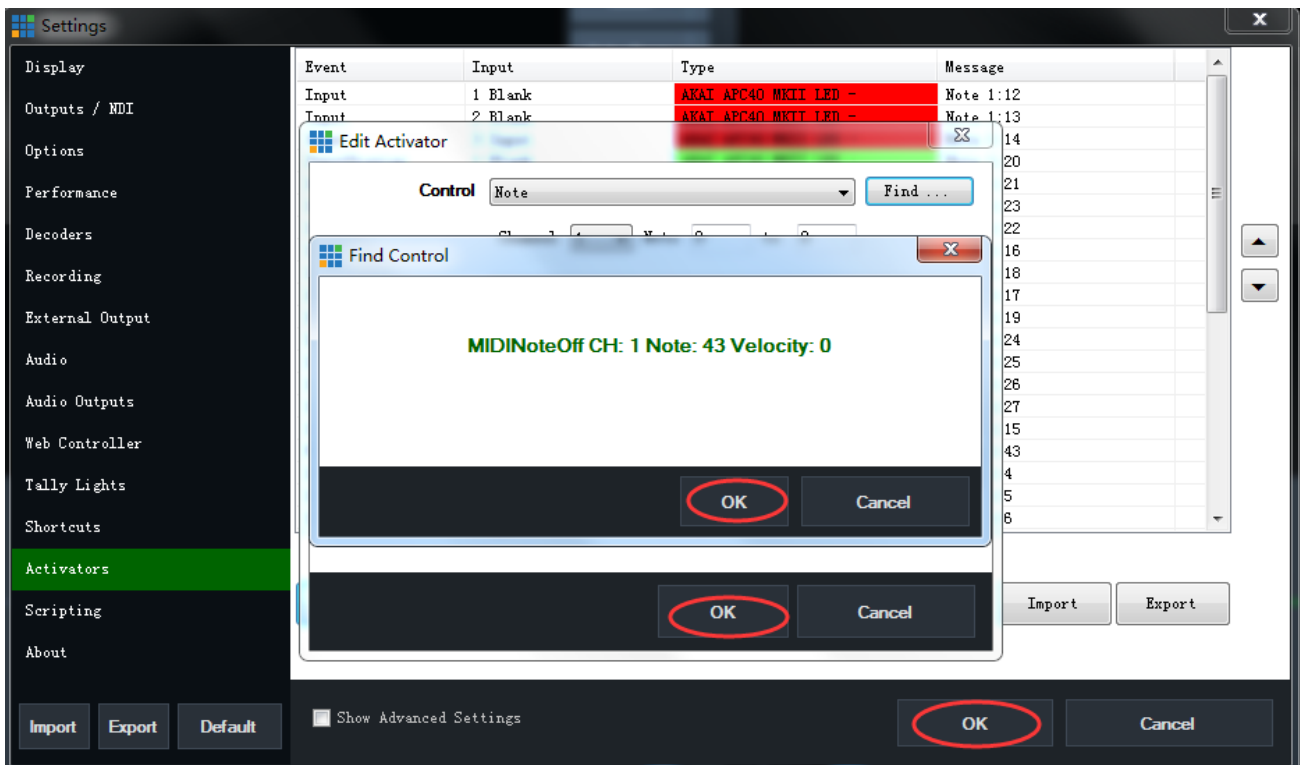
'MIDINoteOff CH...'; At this point the button has been recognized by the software, click 'OK';



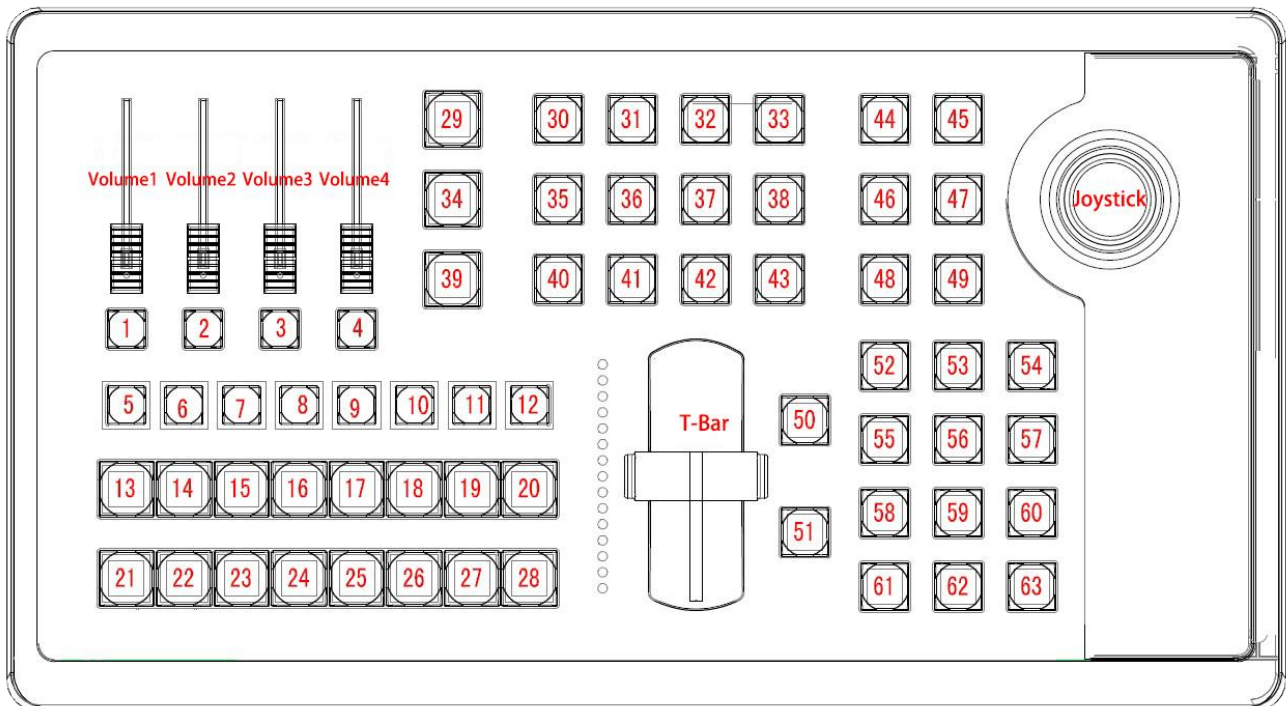


Click OK in 3 windows;

At this time, the button has been defined, which can demonstrate the button definition;



vMix Joystick Connect with PTZ Cameras



This vMix Console support camera PTZ Control.

Note:

PTZ camera with the *VISCA*, *PELCO-P*, *PELCO-D* protocol.

Default Baud Rate 9600

Wiring via *RS422*

Change Communication Protocol (3-Keys Combination)

Key-29+Key-39+Key-44	Switch protocol to be VISCA
Key-29+Key-39+Key-45	Switch protocol to be PELCO-D
Key-29+Key-39+Key-46	Switch protocol to be PELCO-P

Eg.:if want use VISCA protocol, Press Key-29 and Key-39 first, then press Key-44

Setting Preset Position (2-Keys Combination)

Setting Preset-1	Key-29+Key-44
Setting Preset-2	Key-29+Key-45
Setting Preset-3	Key-29+Key-46
Setting Preset-4	Key-29+Key-47

Calling Preset Position

Calling Preset-1	Key-44
Calling Preset-2	Key-45
Calling Preset-3	Key-46
Calling Preset-4	Key-47

Choose the Correct Camera

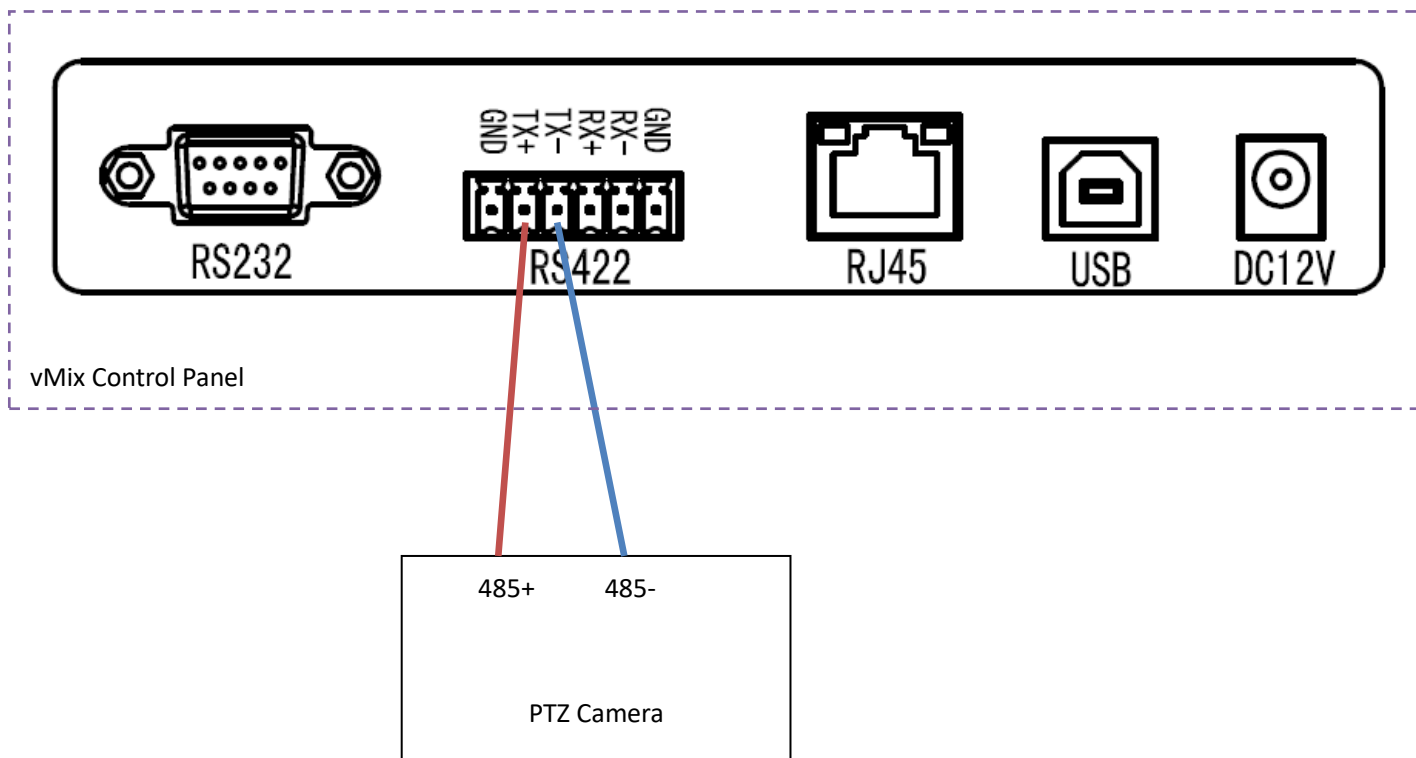
Camera-ID the same with PVW-ID:

Eg: if you want control the Camera-I, Press PVW-1, and PVW-1 light On, then you can control Camera-I.

Camera Wiring with vMix Control Panel

Connect via RS422 port

Wiring via RS485

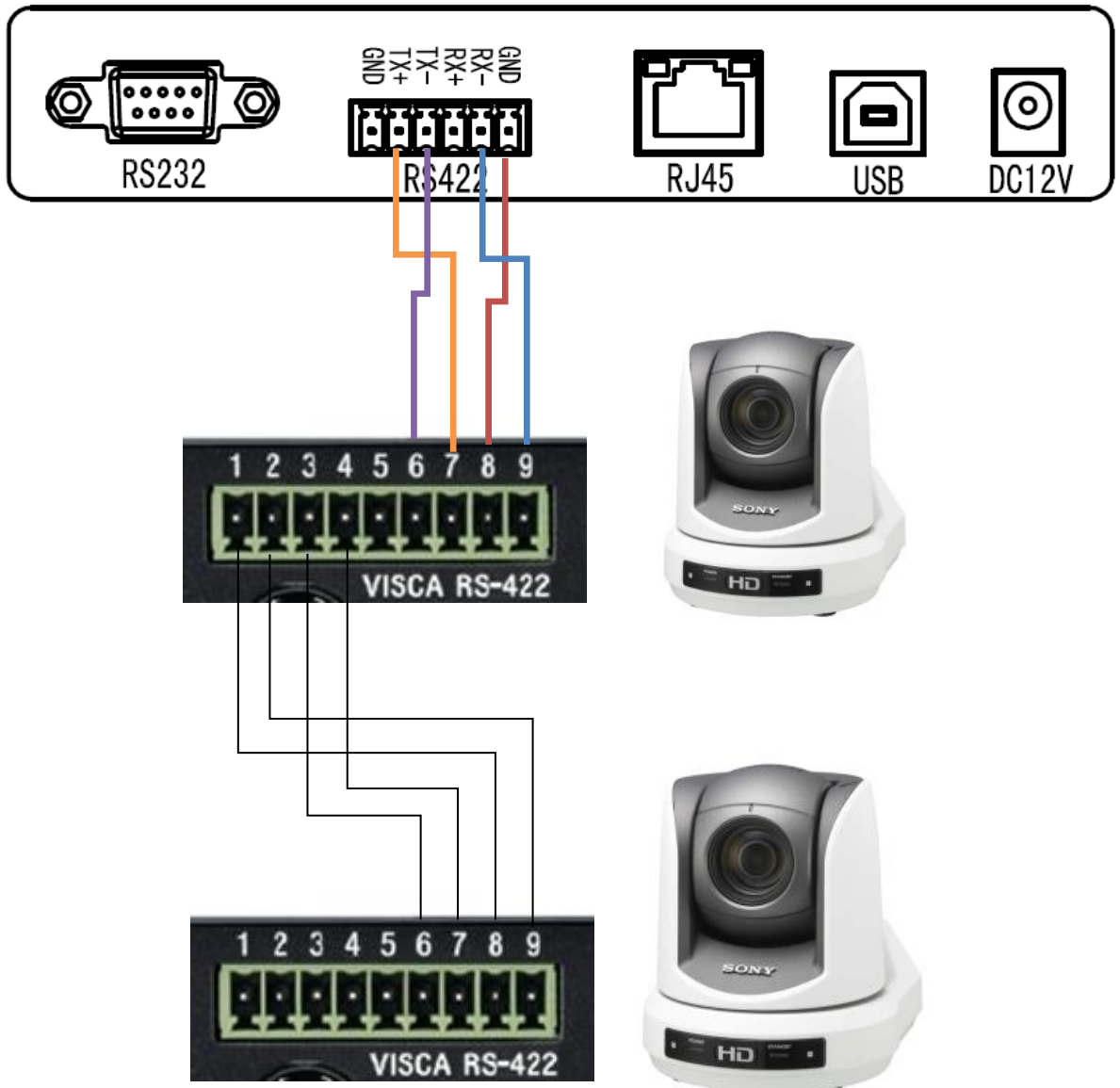


Wiring with SONY BRC-Z330

Note:

Setting of BRC-330

DIP-3 ON	RS422
DIP-4 OFF	9600
DIP5-7 OFF	ID0



NOTICE:

1. We does not provide vMix software, customers need to buy it by themselves.

2. The company only provide switchboard.

**3. To learn more about VMIX software features, please
download the product manual from VMIX's website.**